

DUSK.COM

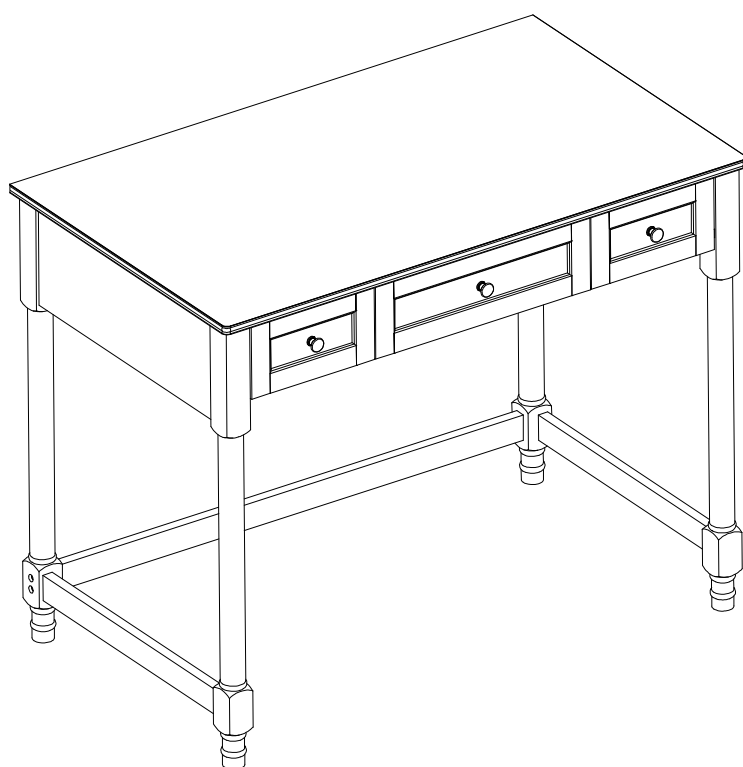
LIVING | BEDROOM | DINING

Range Name: Ruby

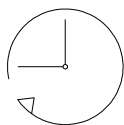
Box 1 Dimensions: W113xD66xH15.2 cm

Product Dimensions: W100xD60xH80 cm

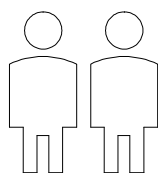
DESK



THIS INSTRUCTION BOOKLET CONTAINS IMPORTANT SAFETY INFORMATION.
PLEASE READ AND KEEP FOR FUTURE REFERENCE.



Up to 45 minutes
assembly time



Two person
assembly

This product is intended for domestic use only, not for commercial purposes.

P-1-14
V-2.0

Important

Assembly Tip

Before you begin, we advise laying everything out on a clean and soft level surface to avoid damaging the unit or your floor. It's best to identify all of the parts and fittings to build your desk, and to familiarise yourself with all of the parts and fittings before building.

Top Tip

We recommend that you build your new desk in the room you'd like it to be located. This will help prevent any risk of damage to the product whilst moving it.

Safety and Care

1. It's important to ensure children and animals are kept away from the assembly area, as there are small components used in this desk which could present a choking hazard.

All plastic and wrapping materials should also be kept away from children and animals to prevent any risk of suffocation.

2. Do not stand on your product.
3. Always use the item on firm level ground, ensuring all legs remain in contact with the ground.
4. Place heaviest items in the lowest drawers.
5. Do not set TV or other heavy objects on top of the product.
6. Children should always be under supervision whilst using this product. Never allow children to climb on the drawers.
7. Never keep more than one drawer open at the same time.
8. The installation of anti tipping kit to secure your furniture is strongly suggested.
9. Serious or fatal crushing injuries can occur from tipping furniture.

Help and Support

Please contact our customer service team on 0113 519 0311 if you have any questions or issues with your purchase.

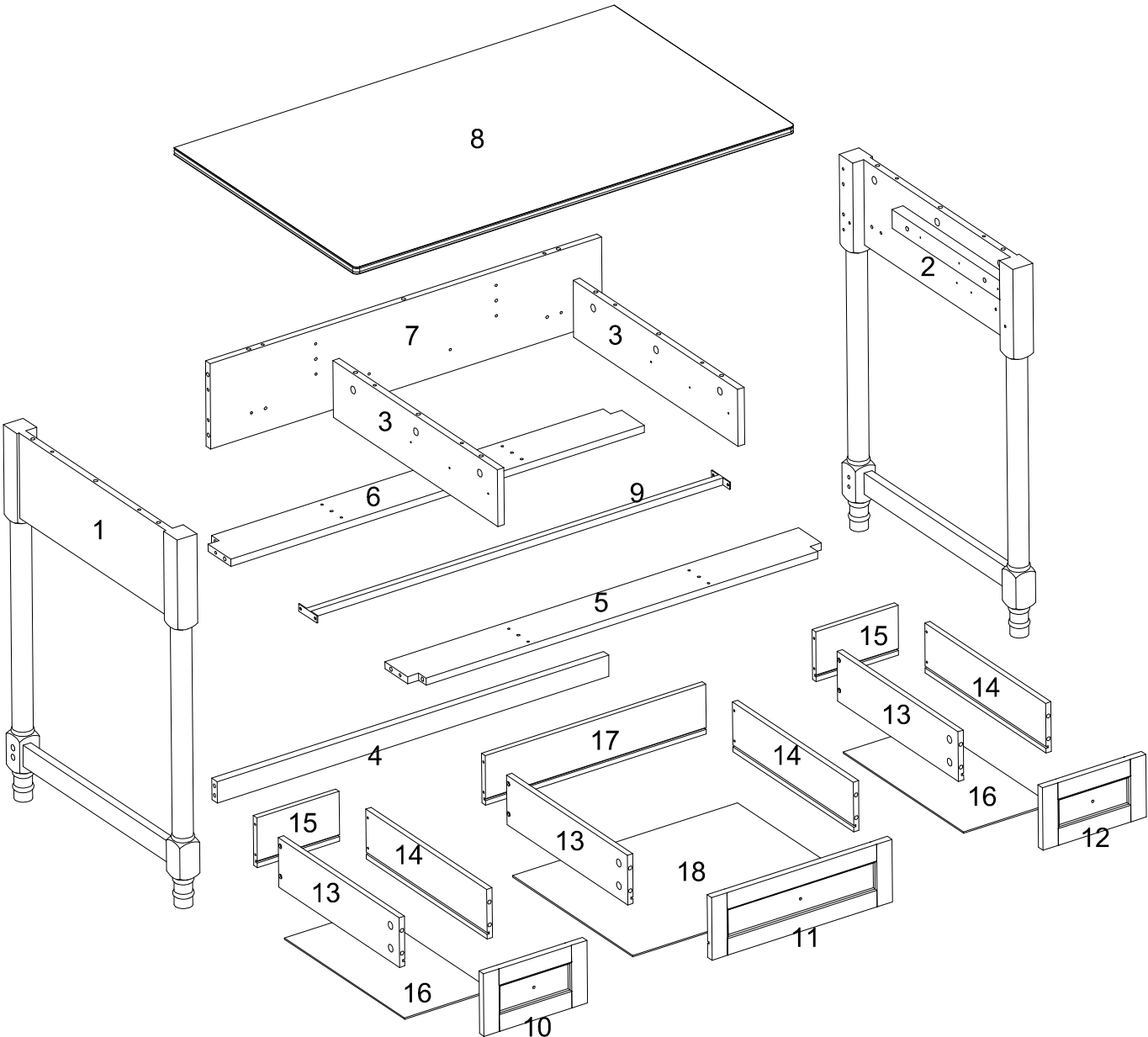
Recycling

Please ensure that packaging is disposed of in a safe and environmentally friendly way, and recycle where possible. Please keep your assembly instructions safe to refer back to in the future.

Care and Maintenance

1. Only clean using a damp cloth, do not use bleach or abrasive cleaners as they may damage the finish over time.
3. Do not scrub or rub the surface when cleaning.
2. Do not use a very wet cloth or allow any liquid to contact with the veneer for a long period of time. Wipe any spillage immediately. Absorption can cause wood to warp or finishes to de-laminate.
4. Do not drag the desk when moving, lift it off the floor instead.
5. Use a placemat or a coaster when putting hot items (e.g. hot drinks and dishes) on the wood surface.
6. It is not recommended to place the item next to sources of heat such as radiators, fires or directly exposed to sunlight. This may cause the wood to crack, split or fade due to the change of the humidity and temperature.
7. Wood will mellow and change colour over time, we recommend that ornaments and items placed on the surface to be moved regularly to prevent uneven mellowing.
8. Regularly check all fixings to ensure none have come loose. Re-tighten if necessary.
9. Avoid sharp items such as a screwdriver or any pointy tools.

Parts list



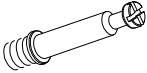


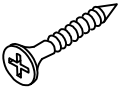
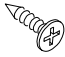


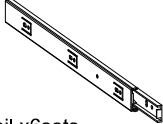



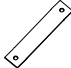
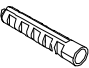


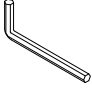
Parts list

Before you begin building your product, please take a moment to read through the instructions and make sure that you have all the relevant parts listed on the parts check list.

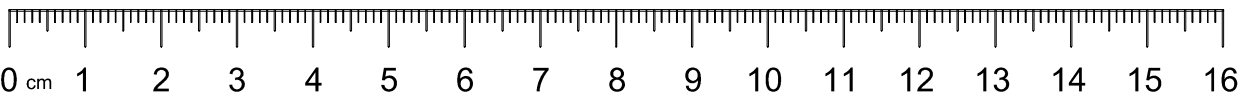
Part Number	Part Description	Quantity	Box No	Part Number	Part Description	Quantity	Box No
1	Left Panel	1 pc	Box 1	10	Left Drawer Front	1 pc	Box 1
2	Right Panel	1 pc	Box 1	11	Middle Drawer Front	1 pc	Box 1
3	Middle Panel	2 pcs	Box 1	12	Right Drawer Front	1 pc	Box 1
4	Lower Support Bar	1 pc	Box 1	13	Drawer Left Side	3 pcs	Box 1
5	Front Support Bar	1 pc	Box 1	14	Drawer Right Side	3 pcs	Box 1
6	Back Support Bar	1 pc	Box 1	15	Left Drawer Back Side	2 pcs	Box 1
7	Back Panel	1 pc	Box 1	16	Left Drawer Bottom	2 pcs	Box 1
8	Top Panel	1 pc	Box 1	17	Middle Drawer Back Side	1 pc	Box 1
9	Support Bar	1 pc	Box 1	18	Middle Drawer Bottom	1 pc	Box 1

Fittings checklist



Please check you have all the fittings listed below with your product in box 1.

 (A) M6x35mm Cam Bolt x39pcs(+4 extra)	 (B) Ø15x9mm Cam Lock x39pcs(+4 extra)	 (C) Ø8x30mm Wood Dowel x26pcs(+4 extra)
 (D) M4x40mm Screw x29pcs(+4 extra)	 (E) M3x12mm Screw x40pcs(+4 extra)	 (F) Cover x16pcs(+2 extra)
 (G) EVA Mat x4pcs	 (H) Slide Rail x6sets	 (I) M6 Nut x4pcs
 (J) M6x60mm Bolt x4pcs	 (K) M3x14mm Screw x2pcs	 (L) Wall Bracket x2pcs
 (M) Wall Anchor x2pcs	 (N) M4x8mm Screw x3pcs	 (O) Handle x3pcs
 (P) Allen Key x1pc		

Bolt Length Ruler:



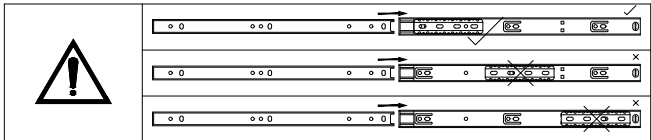
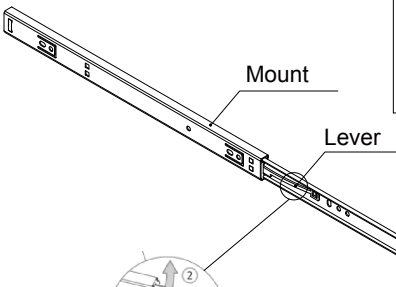
Tool required

  Crosshead Screwdriver (not provided)

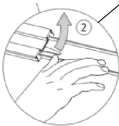
Slides Must Be Separated Before Assembly.
After Separated, Set Aside Until Needed for Assembly.

Pay attention when connecting !
The sliding module must be at the front end.

STEP 1 : Extend Slide

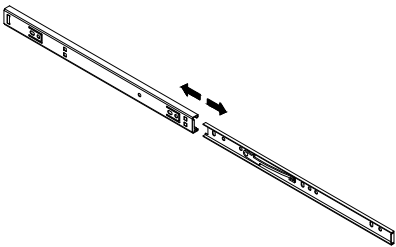


STEP 2: Push Lever UP

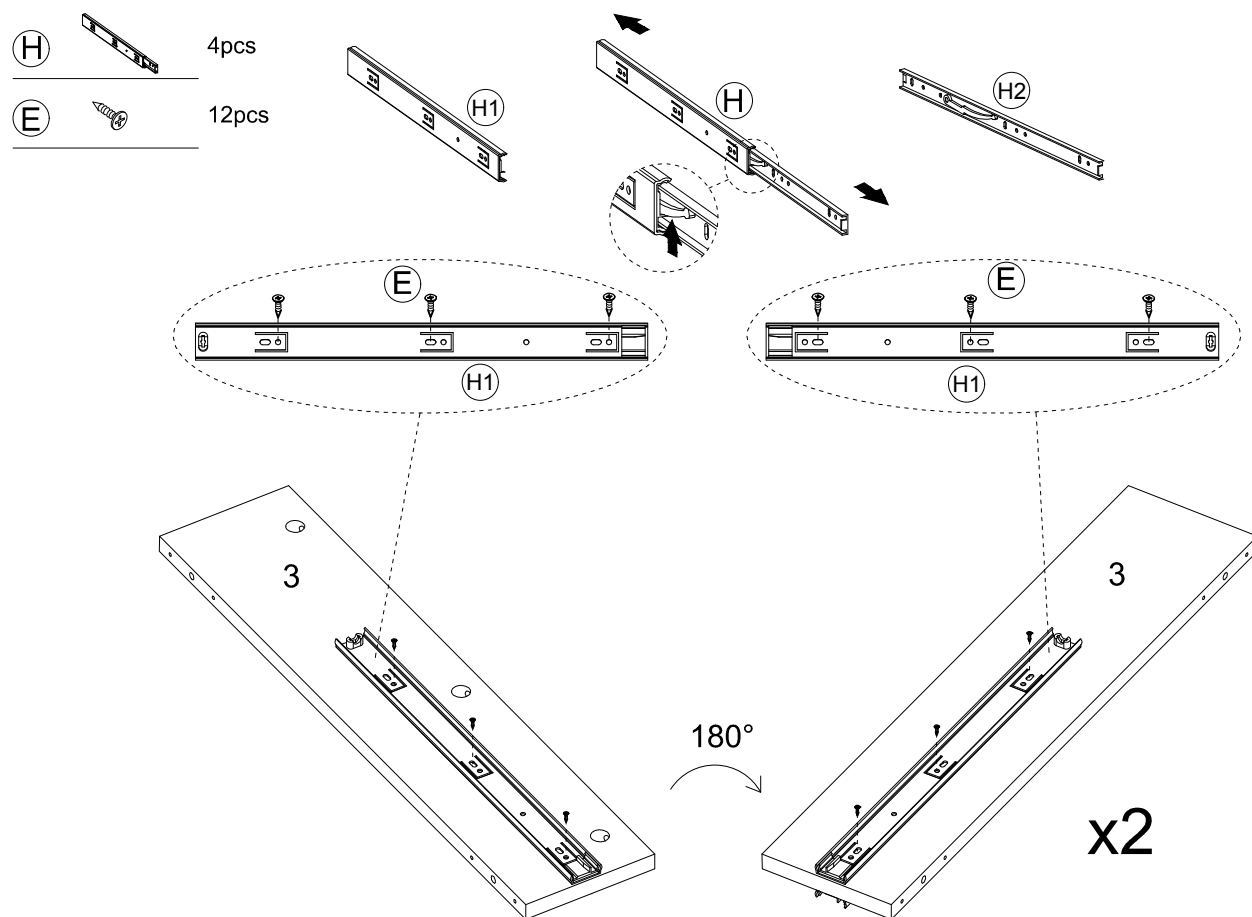


Push lever for the left of drawer ,
press the lever for the right of drawer

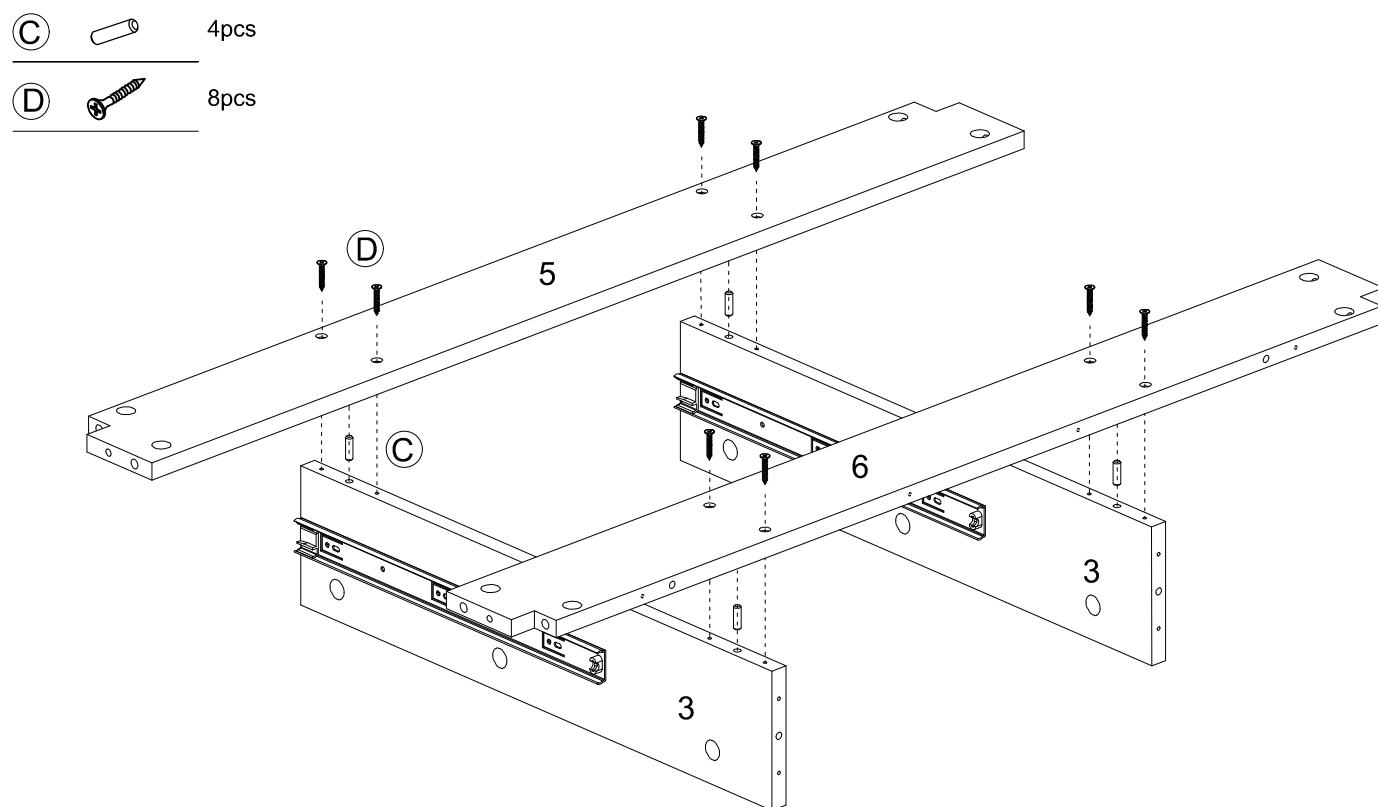
STEP 3: Remove Runner



Step 1: Attach fittings , Slide Rail to the Middle Panel (3).

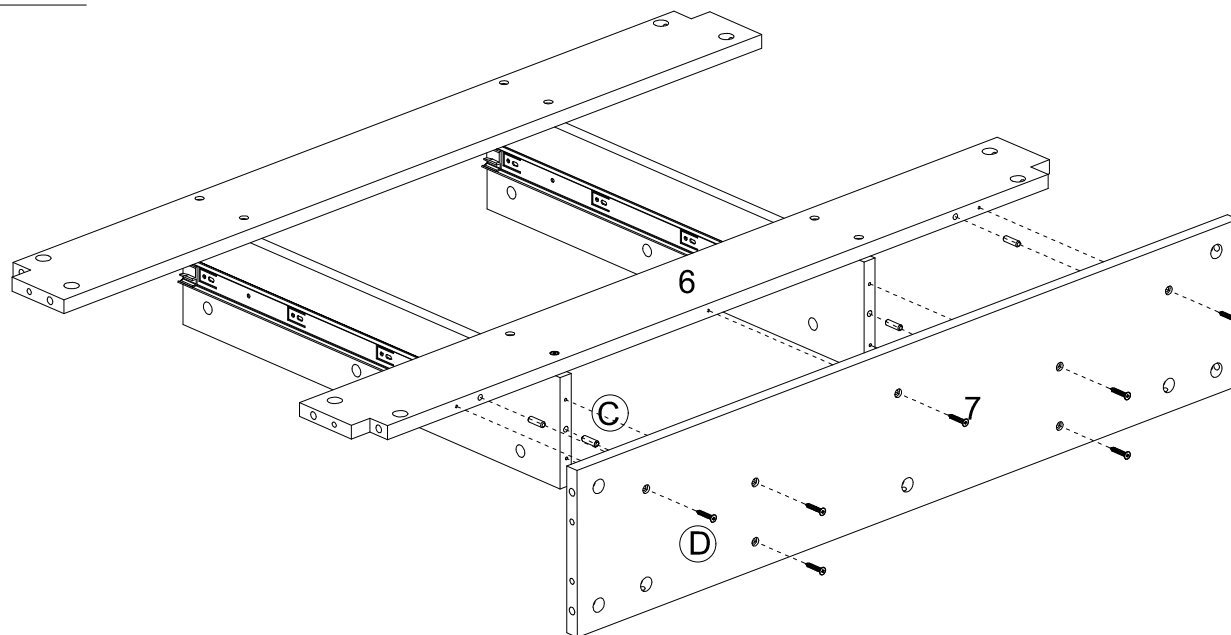


Step 2: Attach the parts(5,6) to the Middle Panel (3).



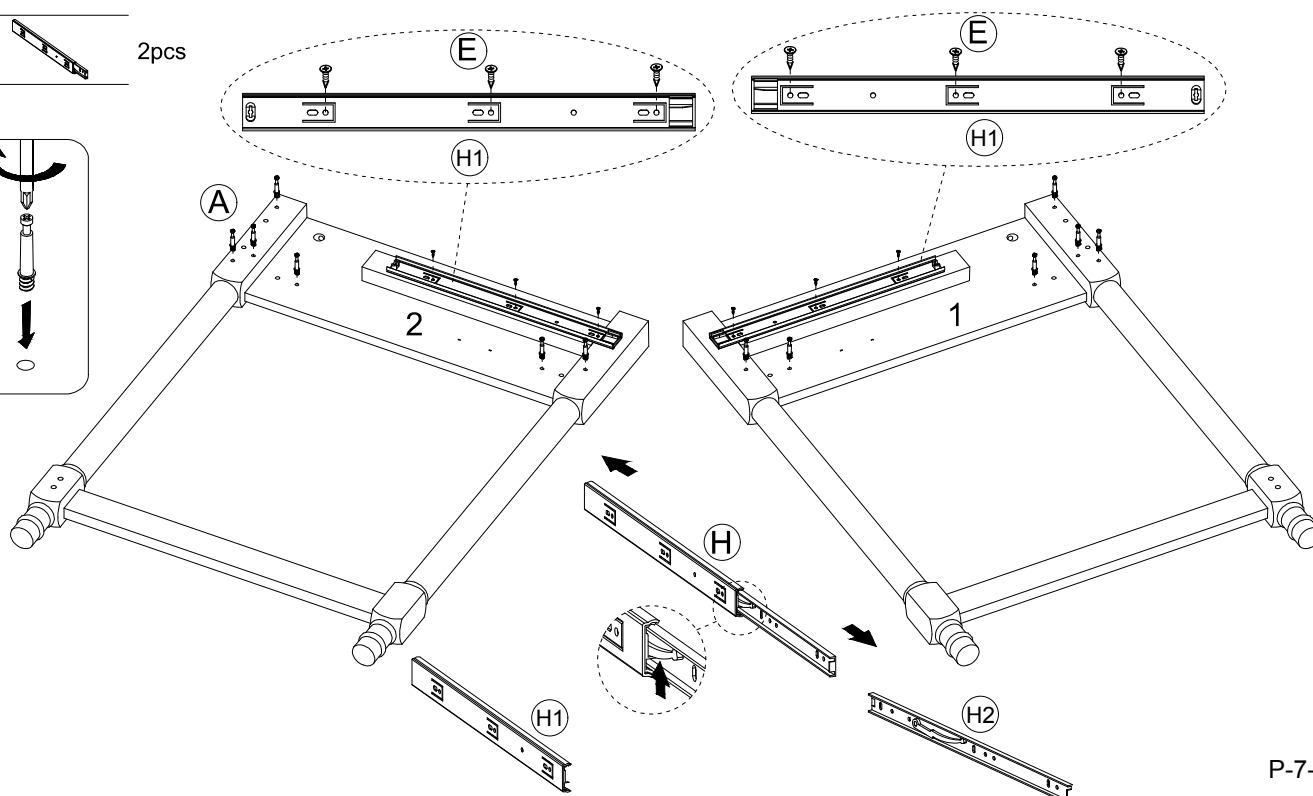
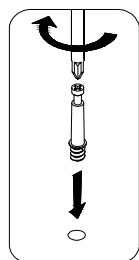
Step 3: Attach the Back Panel(7) to the Frame.

- ③ 4pcs
- ④ 7 pcs



Step 4: Attach fittings , Slide Rail to the Right Panel (2) and the Left Panel (1).

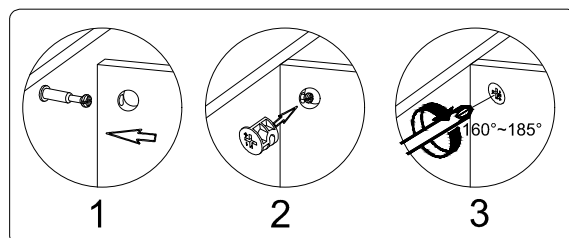
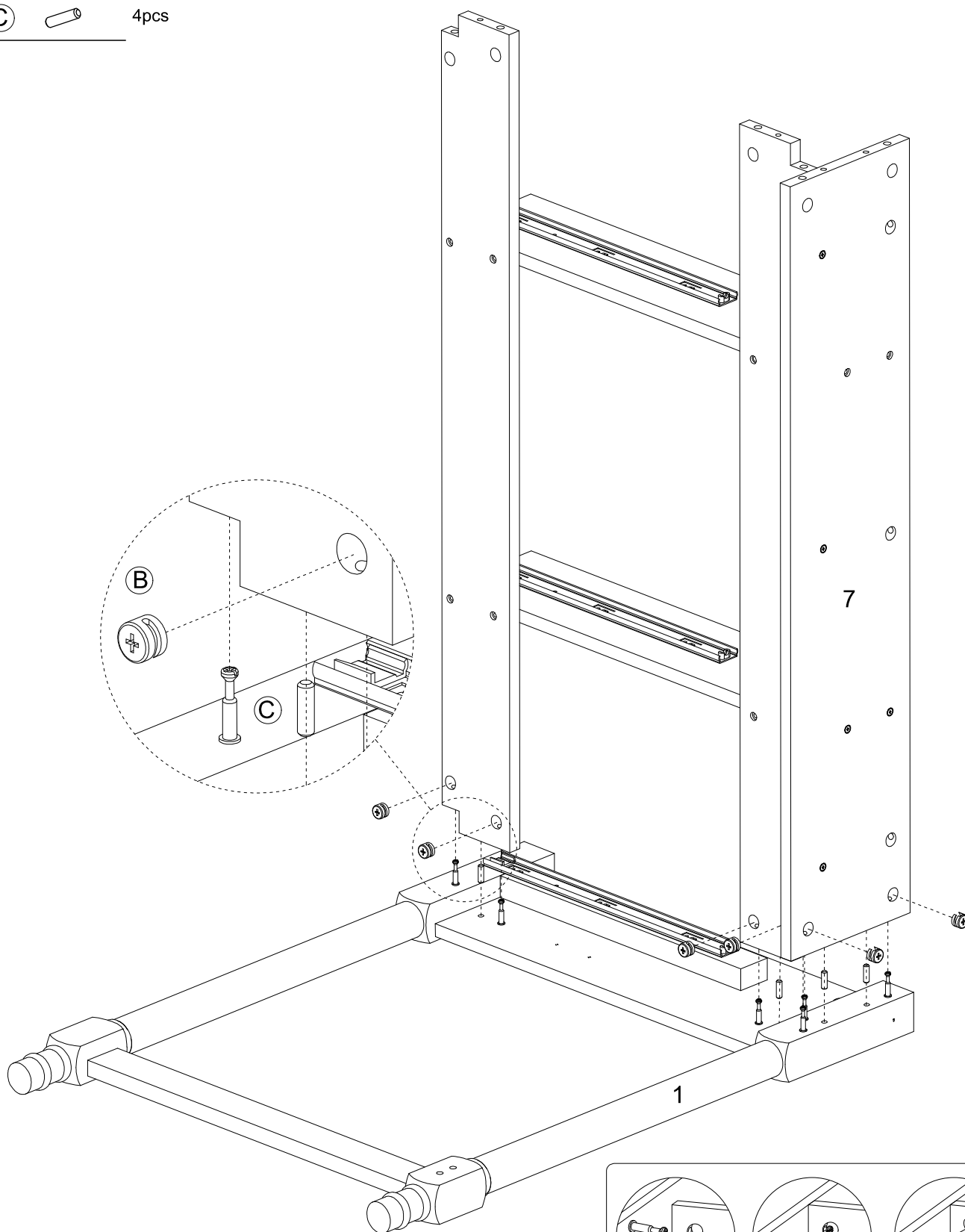
- ① 12pcs
- ⑤ 6pcs
- ⑧ 2pcs



Step 5: Attach the Left Panel (1) to the Frame.

Ⓑ  6pcs

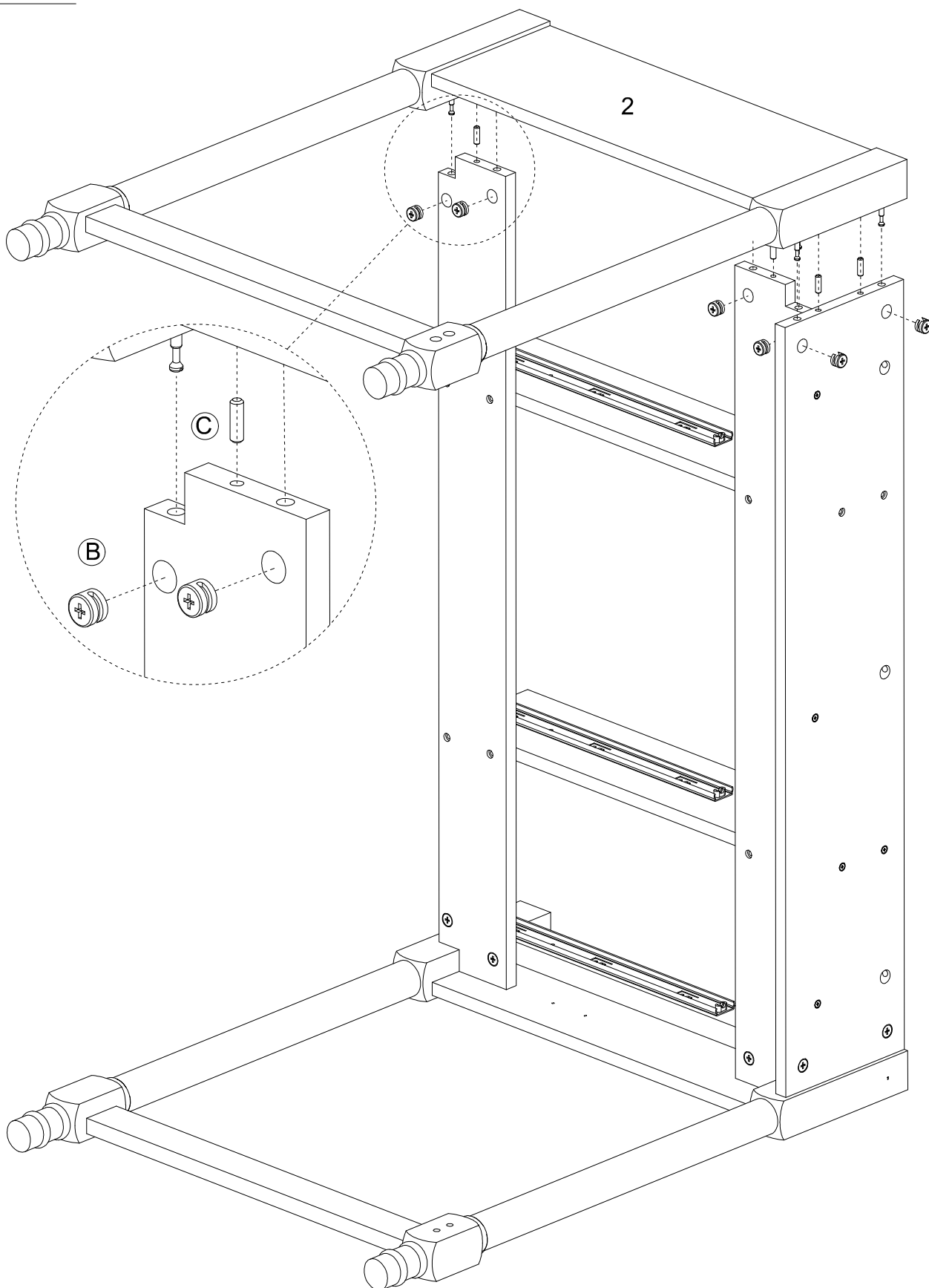
Ⓒ  4pcs



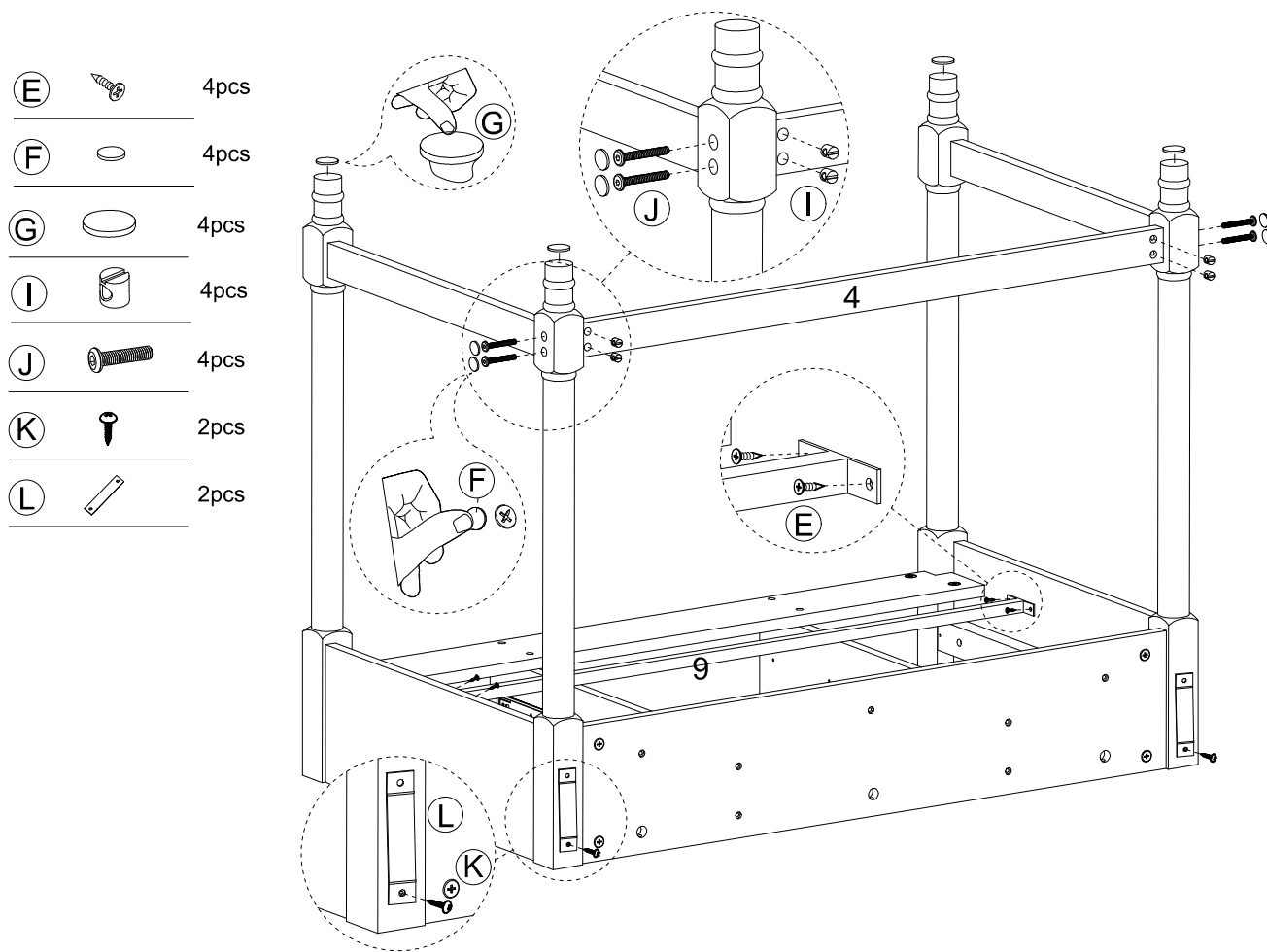
Step 6: Attach the Right Panel (2) to the Frame.

Ⓑ  6pcs

Ⓒ  4pcs

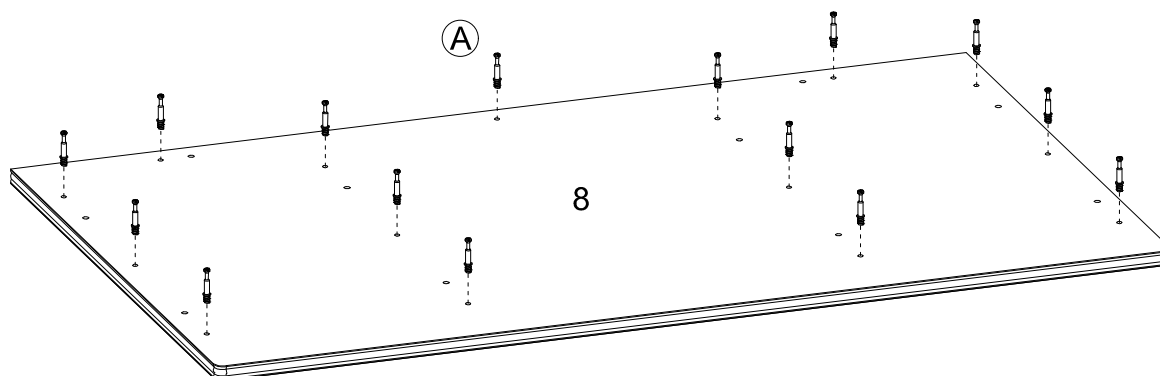


Step 7: Attach the Support Bar (9) and Lower Support Bar (4) to the Frame.



Step 8: Attach the Cam Bolt to the Top Panel (8).

(A)  15pcs

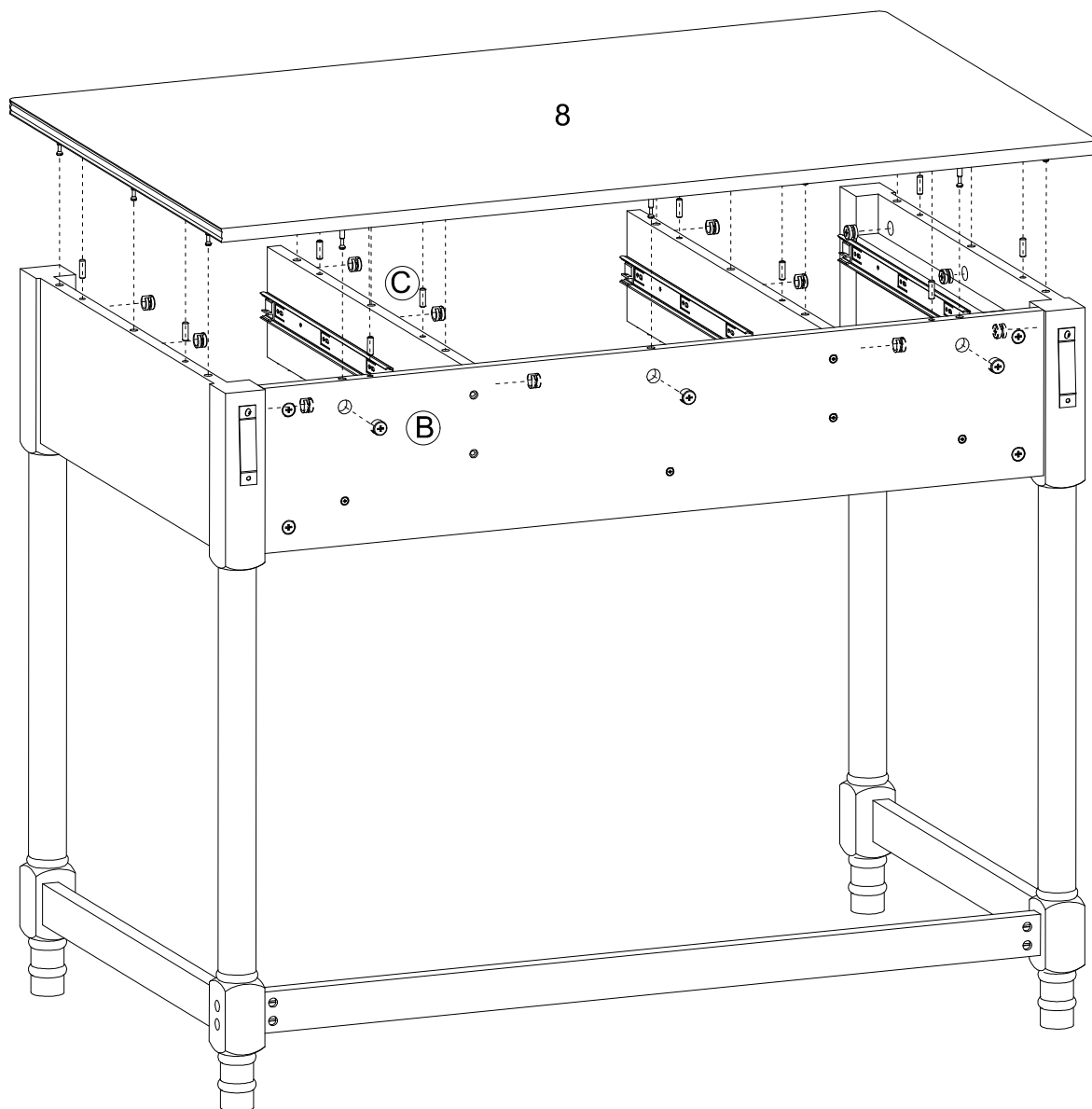


Step 9: Attach the Top Panel (8) to the Frame.

Ⓑ 15pcs

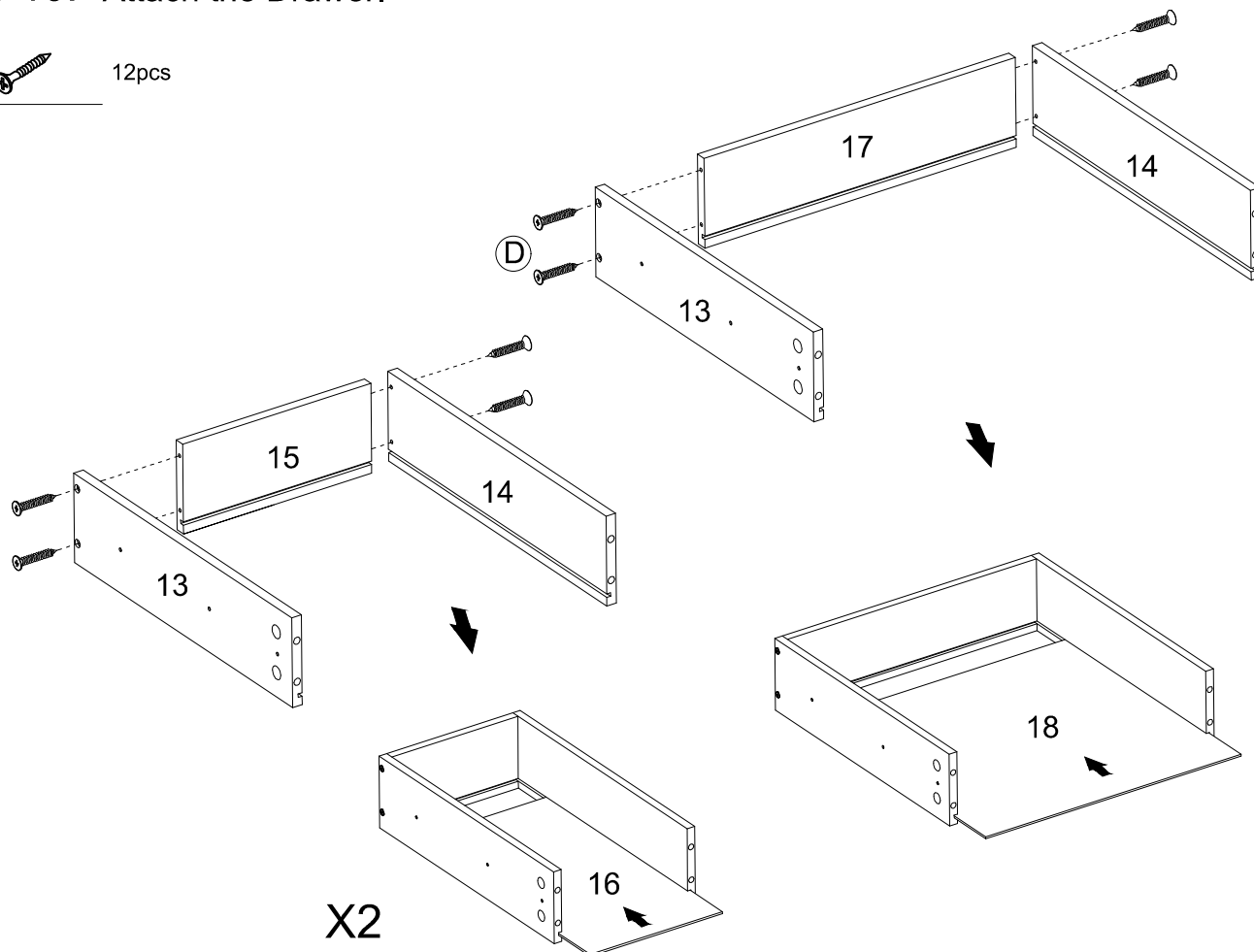


Ⓒ 10pcs



Step 10: Attach the Drawer.

Ⓓ 12pcs

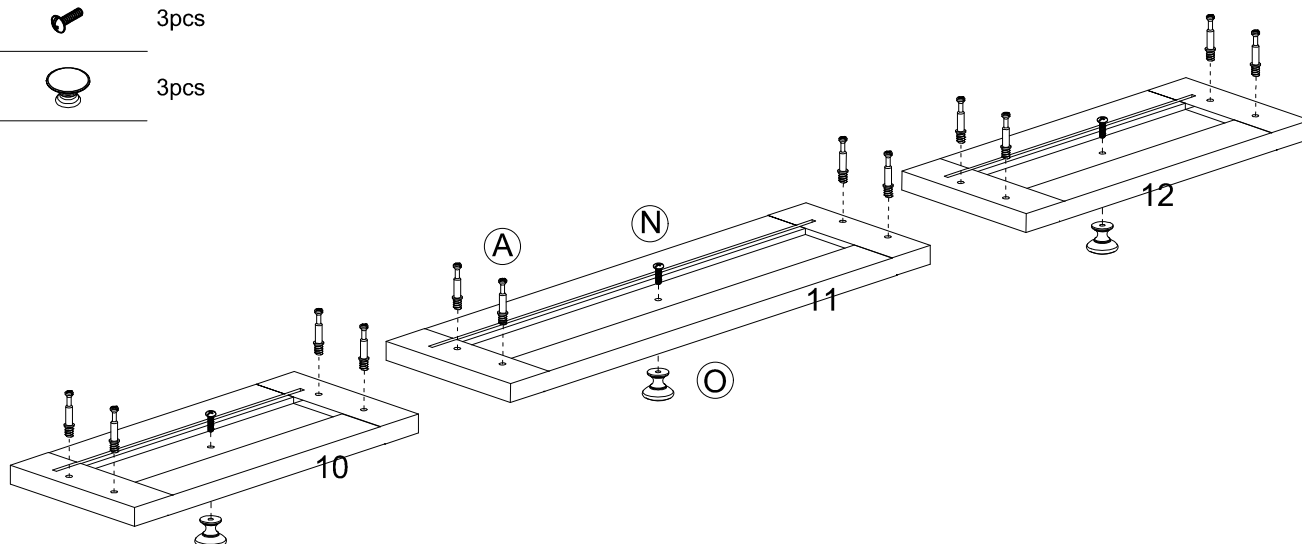


Step 11: Attach the Fittings and Handle to the Drawer Front (10,11,12).

Ⓐ 12pcs

⒩ 3pcs

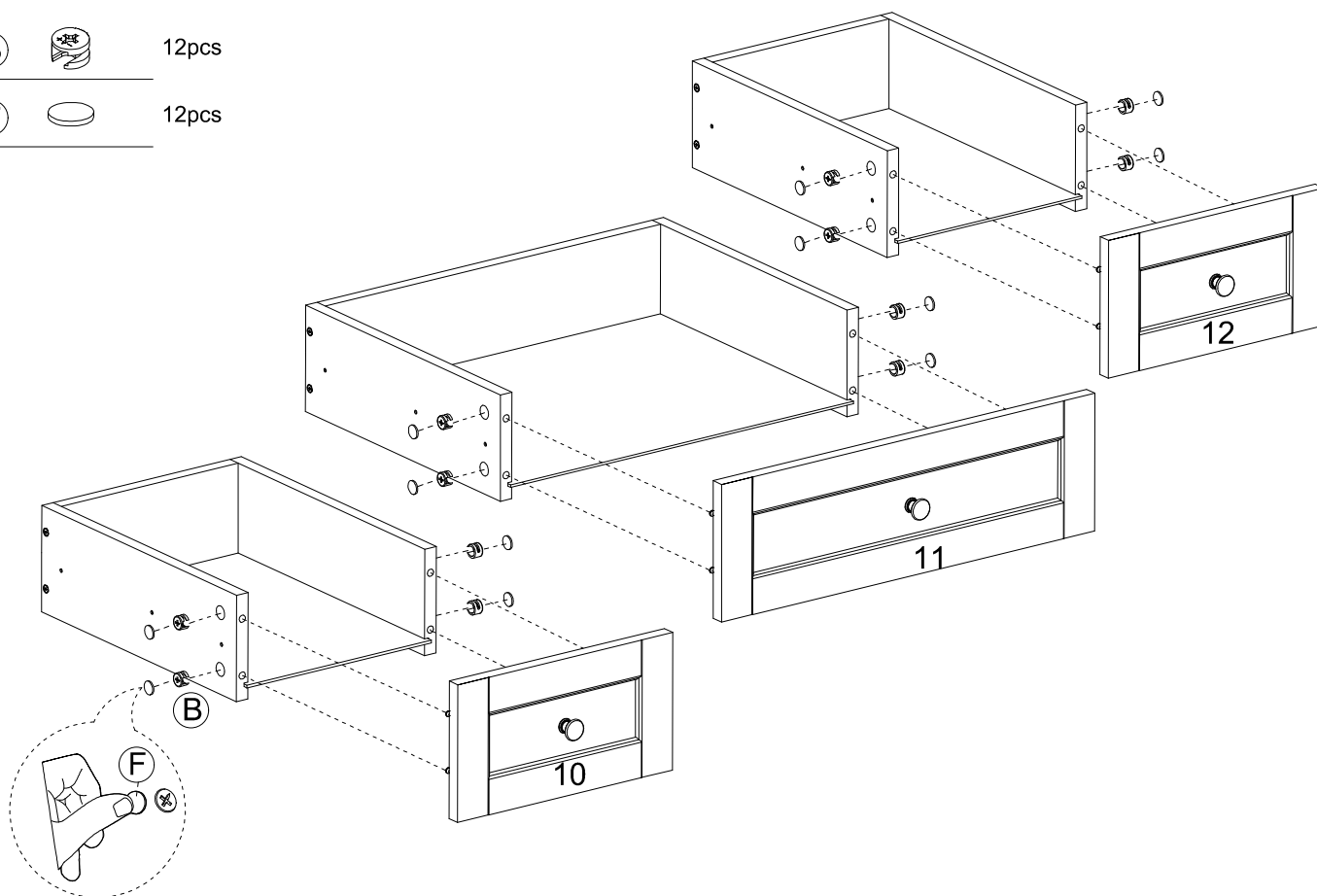
⓪ 3pcs



Step 12: Attach the Drawer Front (10,11,12) to the Frame.

(B)  12pcs

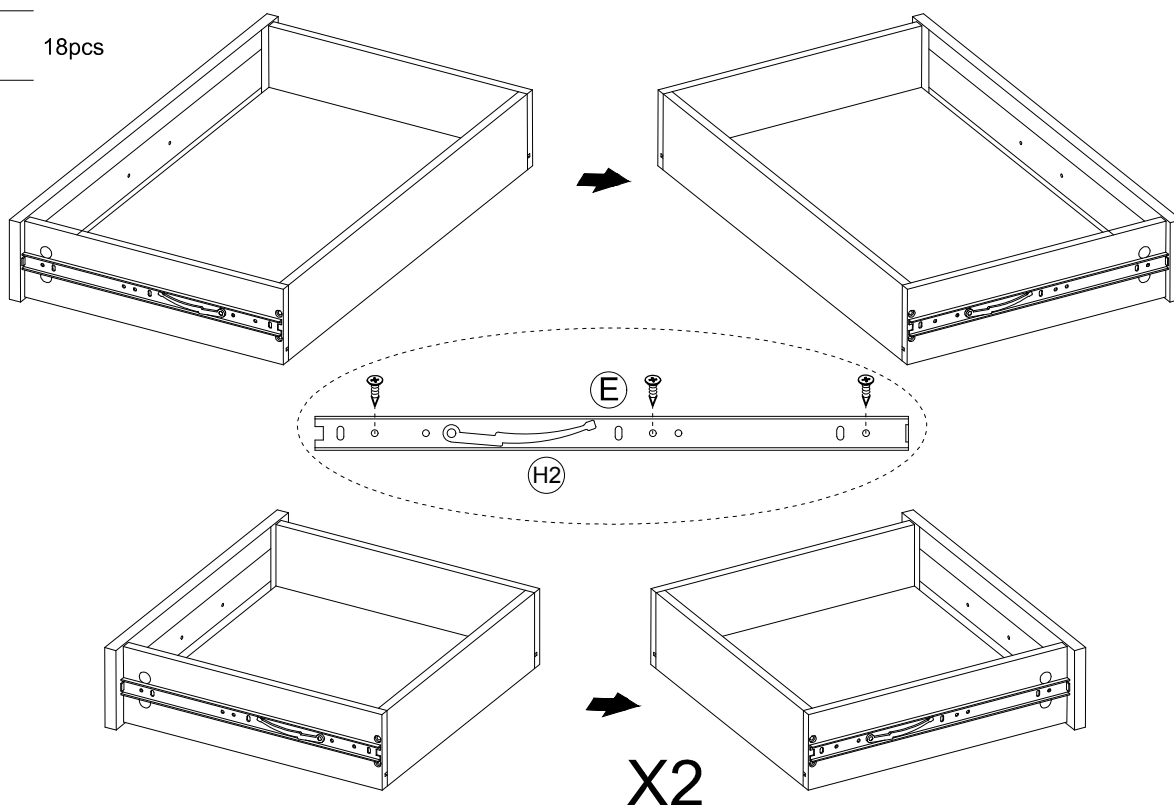
(F)  12pcs



Step 13: Attach the Slide Rail to the Drawers .

(H)  6pcs

(E)  18pcs



Step 14: Fix the wall bracket to the wall by drilling holes, inserting wall anchors, and securing it with screws.

Ⓓ  2pcs

Ⓜ  2pcs

