

# DUSK.COM

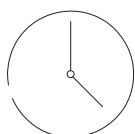
LIVING | BEDROOM | DINING

Range Name: Ruby

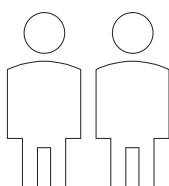
Box 1 dimensions: W65.5xD51.5xH16.5 cm

Product dimensions: W52xD45xH61 cm

## Bedside



Up to 40 minutes  
assembly time



Two person  
assembly

This product is intended for domestic use only, not for commercial purposes.

P-1-11  
V-2.0

# IMPORTANT

## ASSEMBLY TIP

Before you begin, it's best to identify all of the parts and fittings to build your bedside frame. We advise laying these out on the floor to check you have everything, and to familiarise yourself with all of the parts and fittings before building.

## TOP TIP

We recommend that you assemble the bedside in the room you'd like it to be located. This will help prevent any risk of damage to the frame whilst moving it.

## SAFETY AND CARE

1. It's important to ensure children and animals are kept away from the assembly area, as there are small components used in this product which could present a choking hazard. All plastic and wrapping materials should also be kept away from children and animals to prevent any risk of suffocation.
2. Do not stand on your product.
3. Always use the item on firm level ground, ensuring all legs remain in contact with the ground.
4. Place heaviest items in the lowest drawers.
5. Do not set TV or other heavy objects on top of the product.
6. Children should always be under supervision whilst using this product. Never allow children to climb on the drawers.
7. Never keep more than one drawer open at the same time.
8. In order to prevent overturning, this product must be used with the wall attachment device provided.
9. Serious or fatal crushing injuries can occur from tipping furniture.

## HELP AND SUPPORT

Please contact our customer service team on 0113 519 0311 if you have any questions or issues with your purchase.

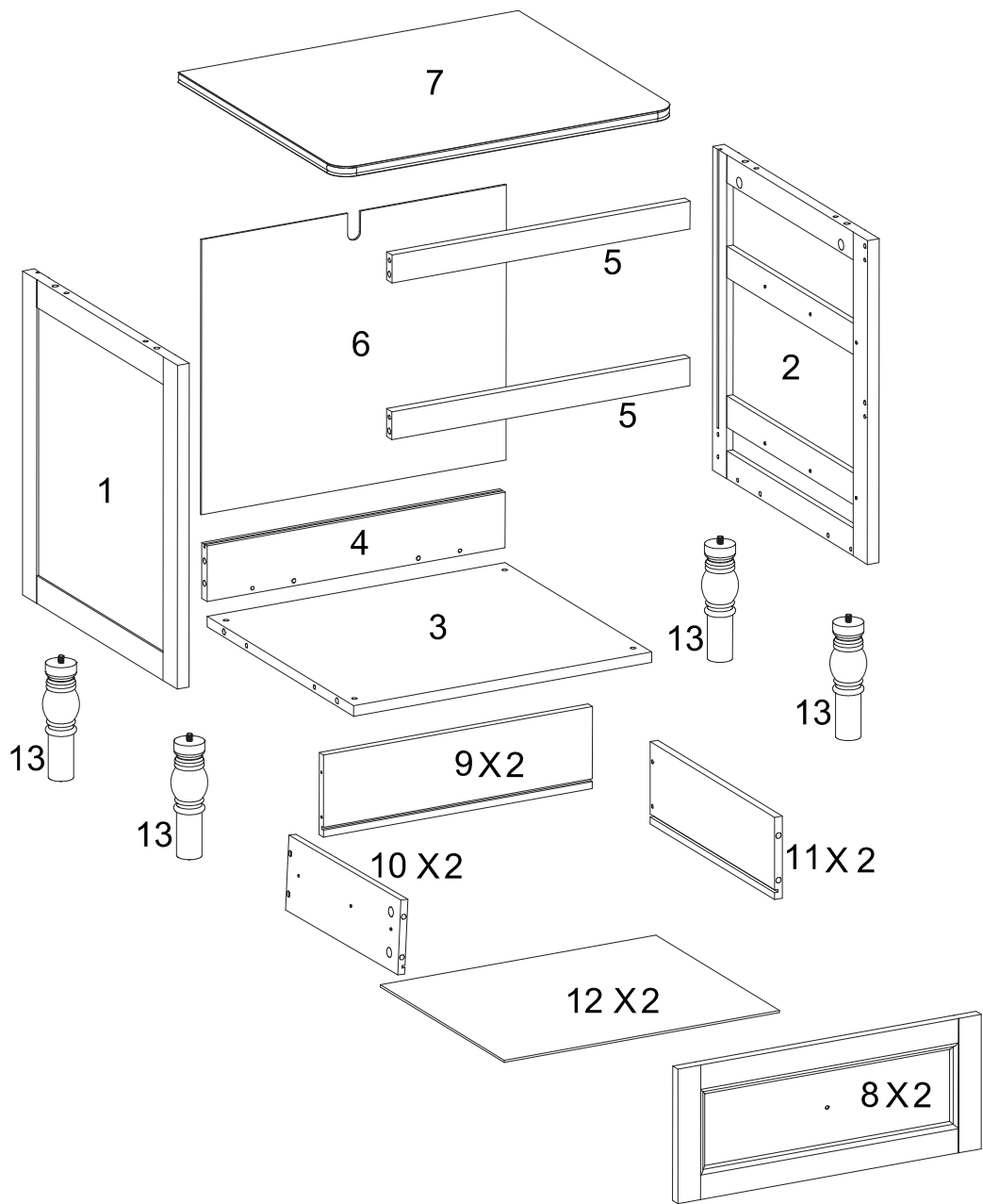
## RECYCLING

Please ensure that packaging is disposed of in a safe and environmentally friendly way, and recycle where possible. Please keep your assembly instructions safe to refer back to in the future.

## CARE AND MAINTENANCE

1. Only clean using a damp cloth, do not use bleach or abrasive cleaners as they may damage the finish over time.
2. Do not use a very wet cloth or allow any liquid to contact with the surface for a long period of time. Wipe any spillage immediately. Absorption can cause wood to warp or finishes to de-laminate.
3. Do not scrub or rub the surface when cleaning.
4. Do not drag the bedside when moving, lift it off the floor instead.
5. Use a placemat or a coaster when putting hot items (e.g. hot drinks and dishes) on the wood surface.
6. It is not recommended to place the item next to sources of heat such as radiators, fires or directly exposed to sunlight. This may cause the wood to crack, split or fade due to the heat and humidity.
7. Wood will mellow and change colour over time, we recommend that ornaments and items placed on the surface to be moved regularly to prevent uneven mellowing.
8. Regularly check all fixings to ensure none have come loose. Re-tighten if necessary.
9. Avoid sharp items such as a screwdriver or any pointy tools.

Parts list



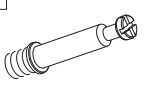
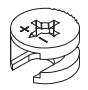

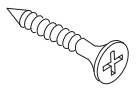
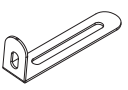
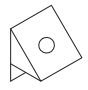


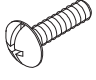
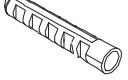


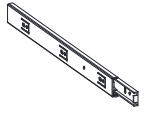
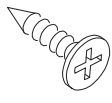
# Parts list

Before you begin building your bedside, please take a moment to read through the instructions and make sure that you have all the relevant parts listed on the parts check list.

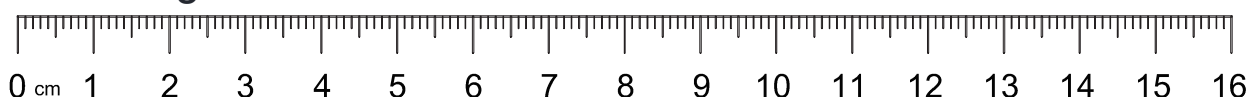
Part Number	Part Description	Quantity	Box No
1	Left Side Panel	1 pc	Box 1
2	Right Side Panel	1 pc	Box 1
3	Bottom Panel	1 pc	Box 1
4	Back Support Bar	1 pc	Box 1
5	Front Support Bar	2 pcs	Box 1
6	Back Panel	1 pc	Box 1
7	Top Panel	1 pc	Box 1
8	Drawer Front	2 pcs	Box 1
9	Drawer Back Side	2 pcs	Box 1
10	Drawer Left Side	2 pcs	Box 1
11	Drawer Right Side	2 pcs	Box 1
12	Drawer Bottom	2 pcs	Box 1
13	Leg	4 pcs	Box 1

# Fittings

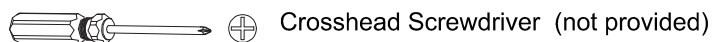
Please check you have all the fittings listed below with your product in box 1.

<b>A</b>  M6*35mm Cam Lock Screw 26pcs+3pcs extra	<b>B</b>  Ø15*9mm Cam Lock 26pcs+3pcs extra	<b>C</b>  Ø6*30mm Dowel 14pcs+1pc extra	<b>D</b>  M4*35mm Screw 9pcs+1pc extra	<b>E</b>  Wall Bracket 1pc	<b>F</b>  Plastic Buckle 8pcs+1pc extra
<b>G</b>  M3.5*14mm Screw 8pcs+1pc extra	<b>H</b>  Knob 2pcs	<b>I</b>  M4*8mm Bolt 2pcs	<b>J</b>  Wall Anchor 1pc	<b>K</b>  M4*14mm Screw 2pcs	<b>L</b>  Cover 8pcs+1pc extra
<b>M</b>  Slide Rail 4sets	<b>N</b>  M3.5*12mm Screw 24pcs+3pcs extra				

## Bolt Length Ruler :



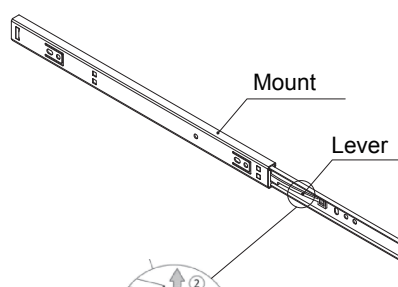
## Tool required



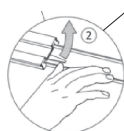
Slides Must Be Separated Before Assembly.  
After Separated, Set Aside Until Needed for Assembly.

Pay attention when connecting !  
The sliding module must be at the front end.

STEP 1 : Extend Slide

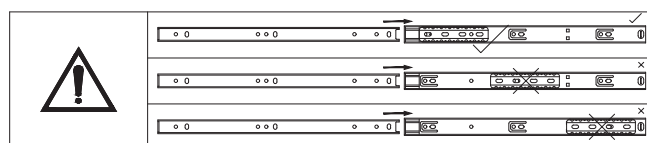
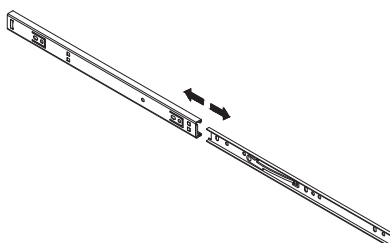


STEP 2: Push Lever UP

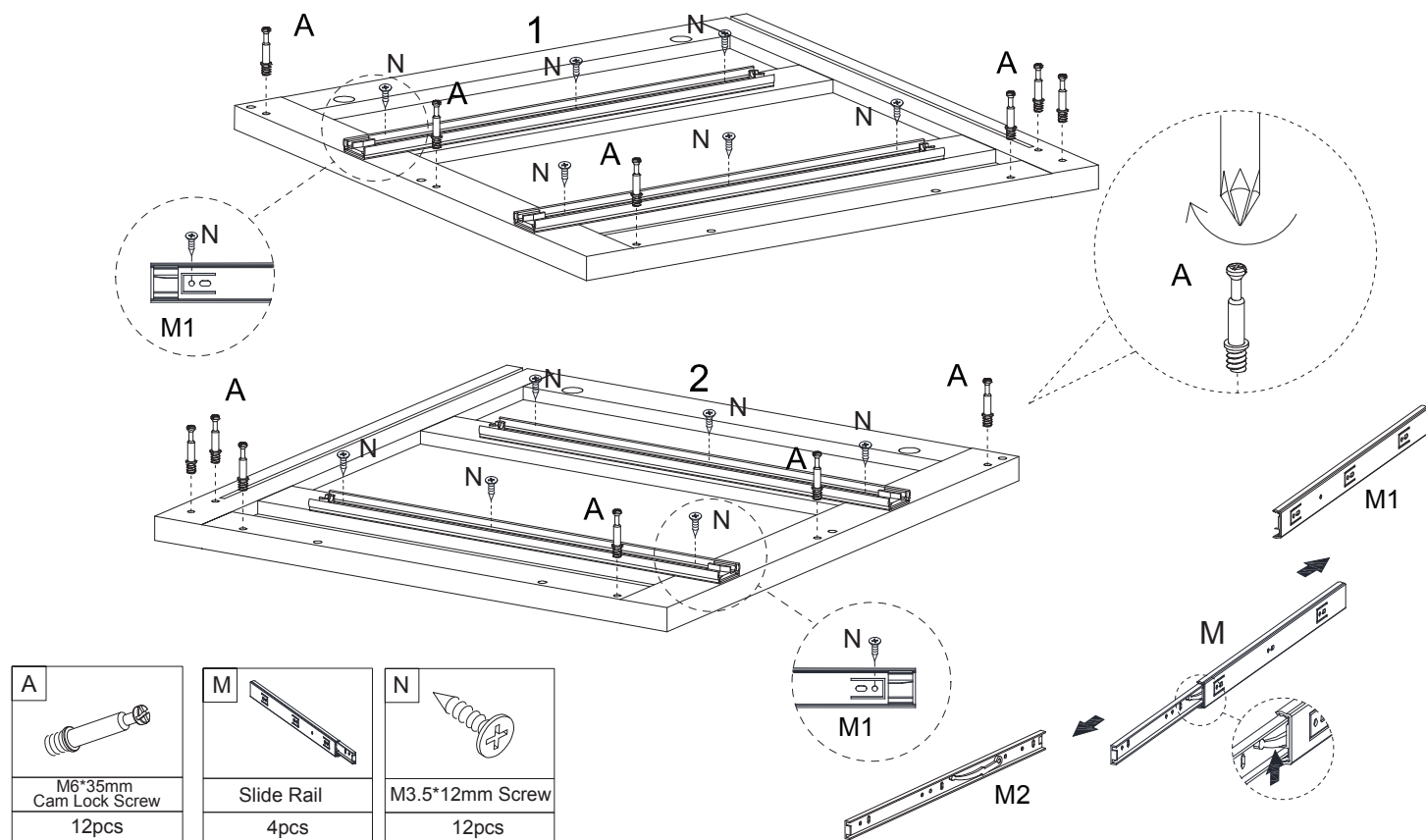


Push lever for the left of drawer ,  
press the lever for the right of drawer

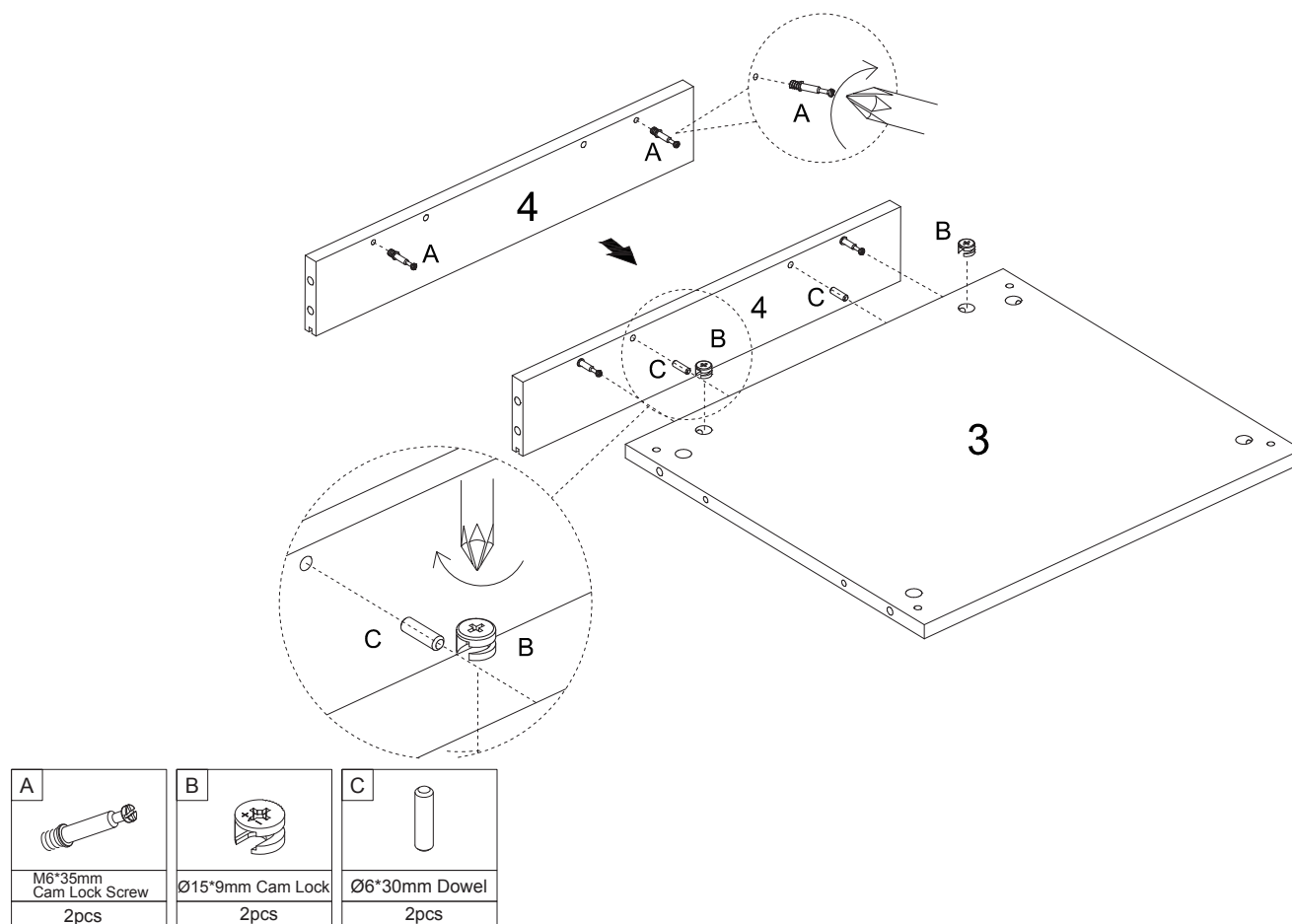
STEP 3: Remove Runner



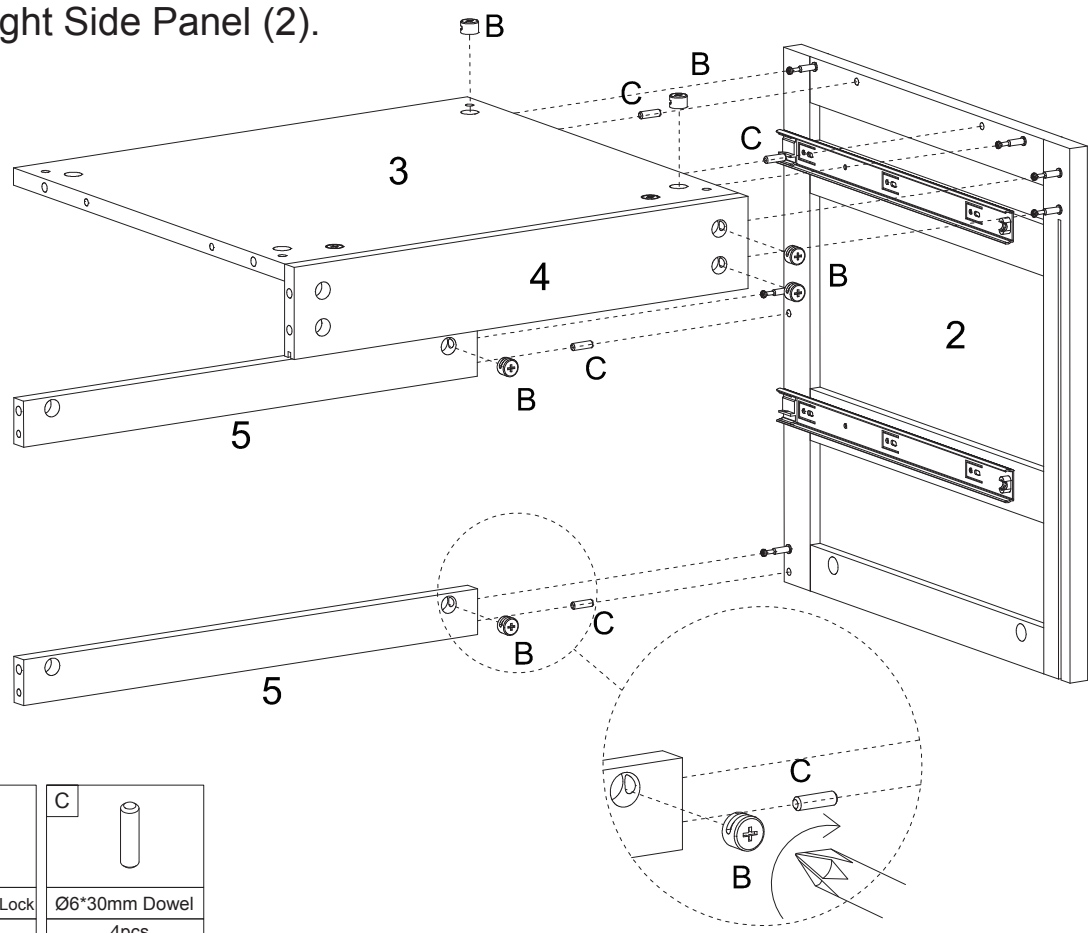
1. Attach Cam Lock Screws to Left Side Panel (1) and Right Side Panel (2), then attach fitting and Slide Rail to the Side Panels.



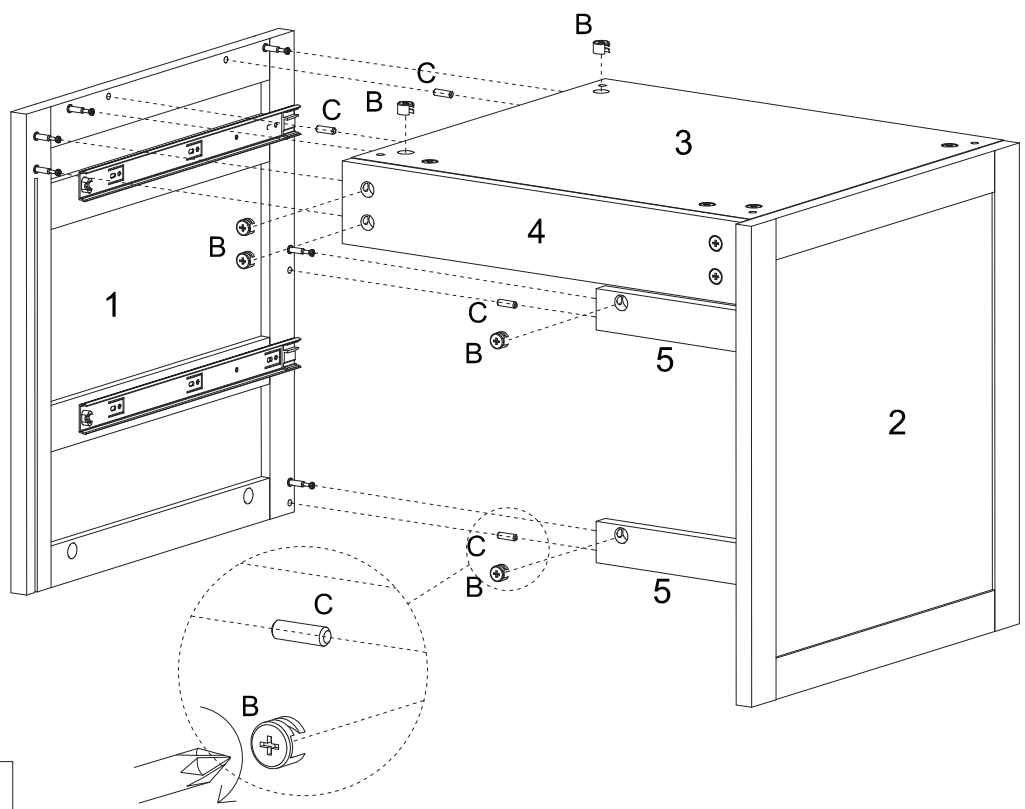
2. Attach Back Support Bar (4) to the Bottom Panel (3).



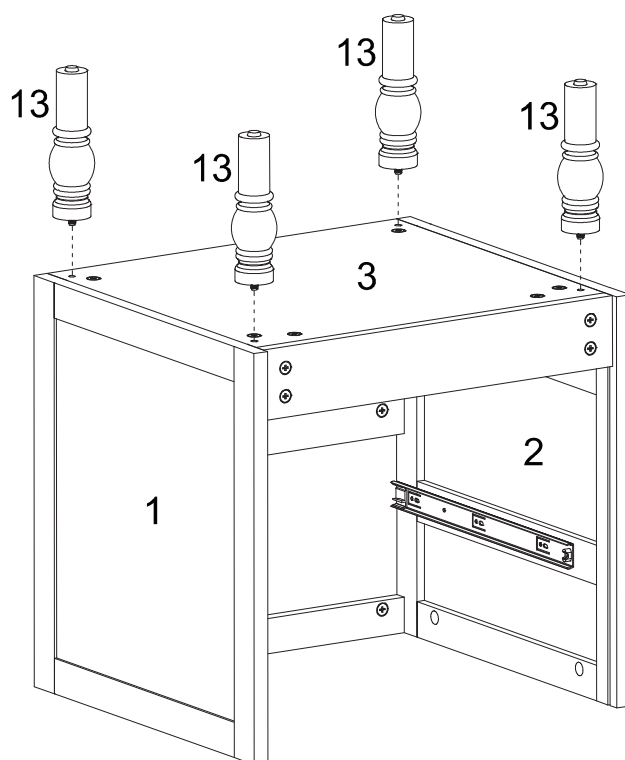
3. Attach Bottom Panel (3), Back Support Bar (4) and Front Support Bar (5) to Right Side Panel (2).



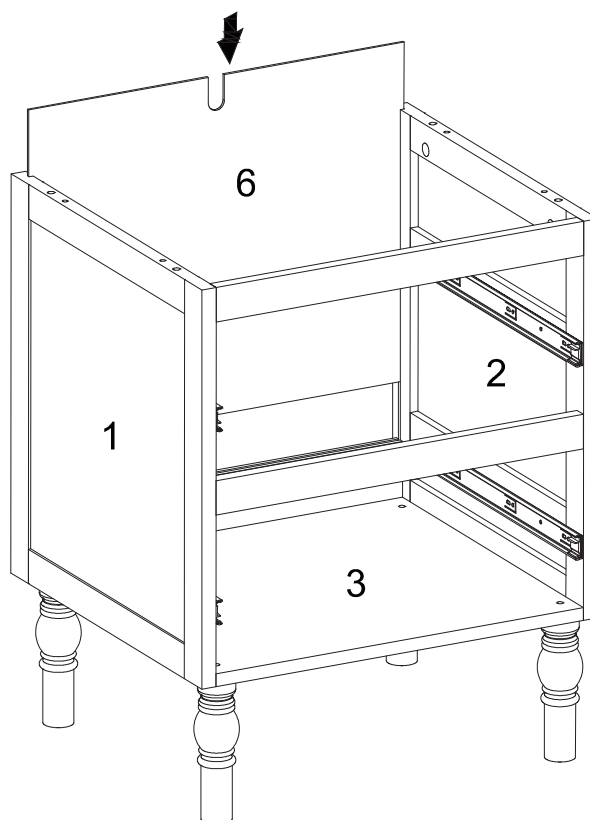
4. Attach Left Side Panel (1) to the Frame.



5. Attach and fasten the Legs (13) to the bottom.

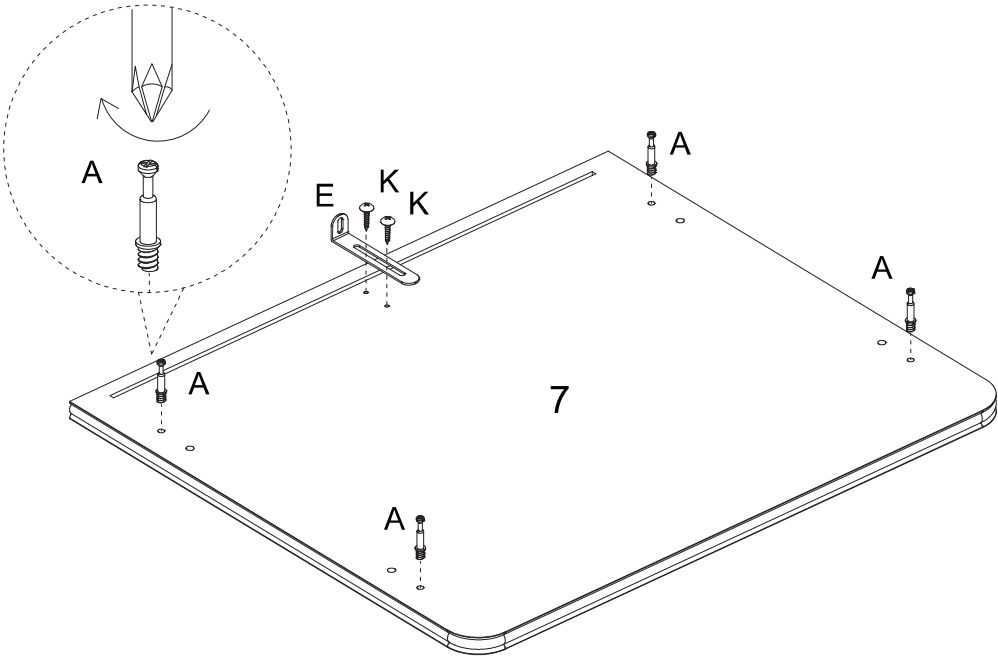


6. Insert Back Panel (6) to the Frame.



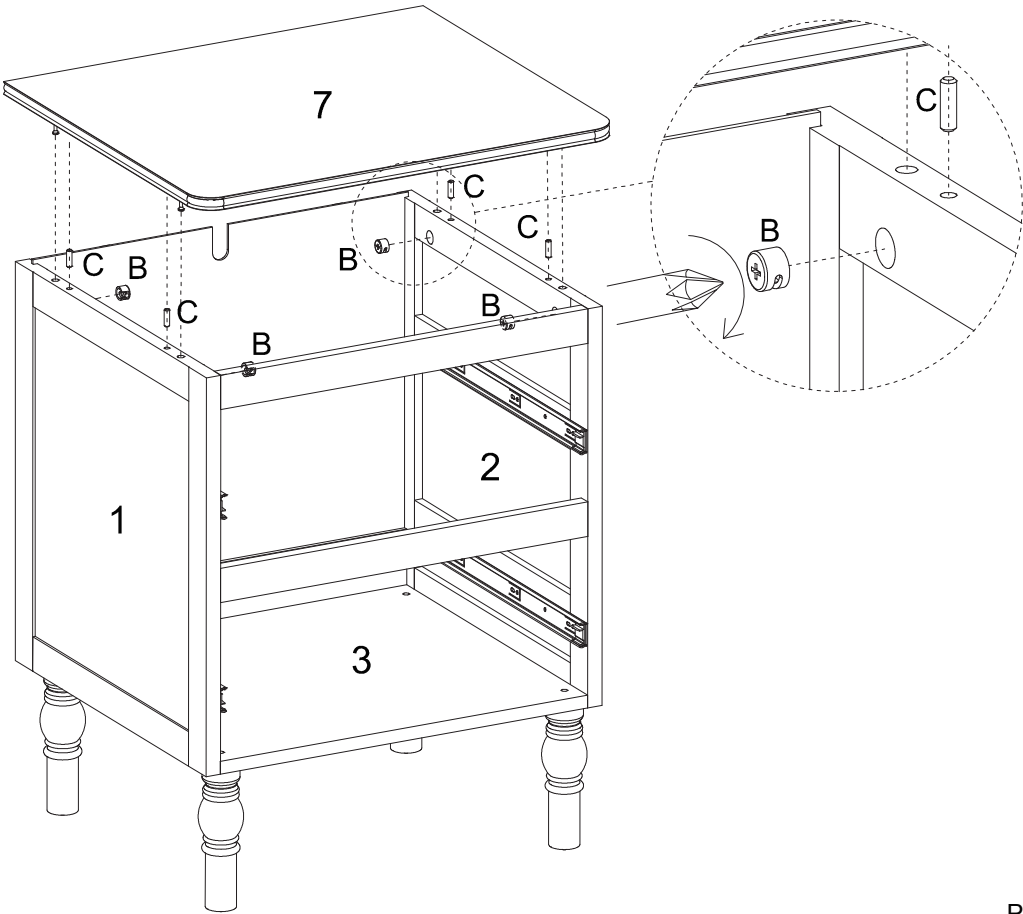


7. Fasten the Wall Bracket and Cam Lock Screws to the Top Panel (7).



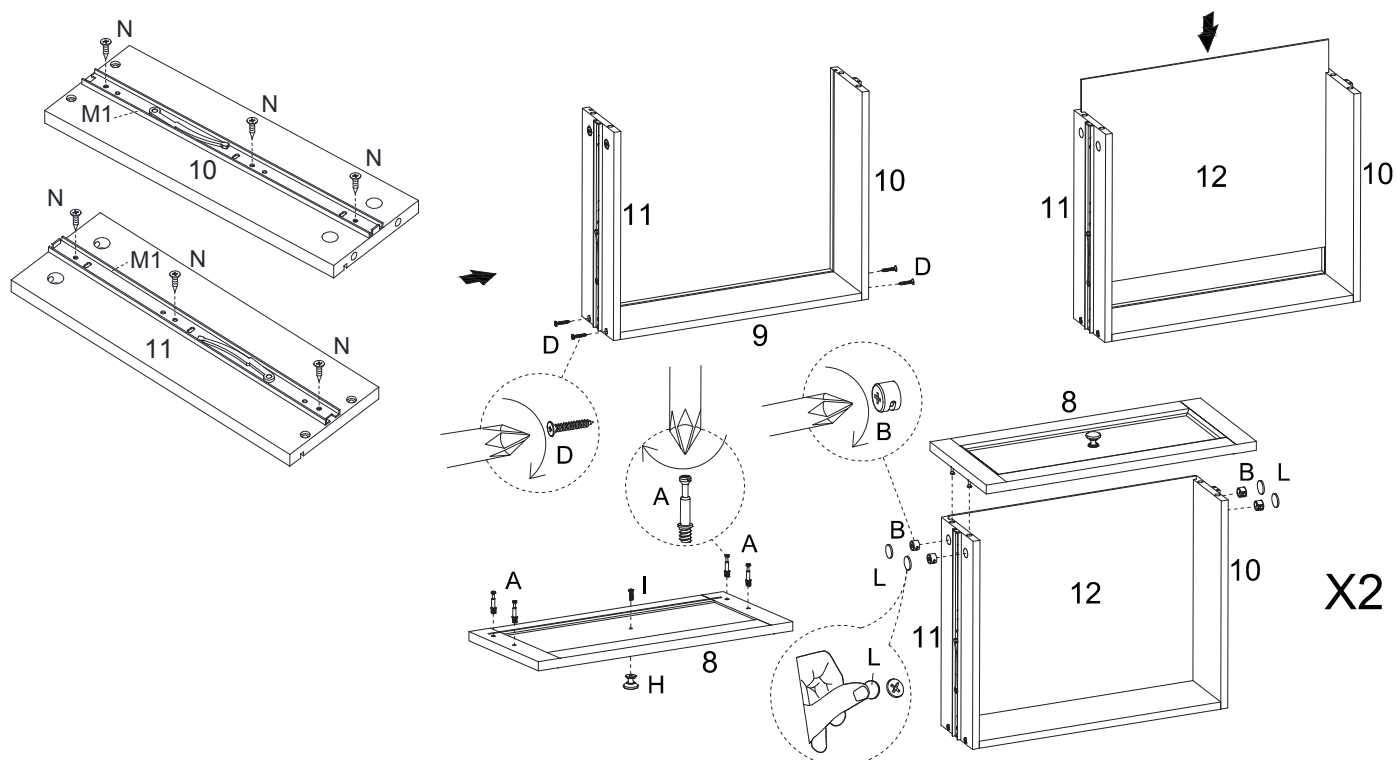
A	E	K
M6*35mm Cam Lock Screw 4pcs	Wall Bracket 1pc	M4*14mm Screw 2pcs









8. Attach Top Panel (7) to the Frame.



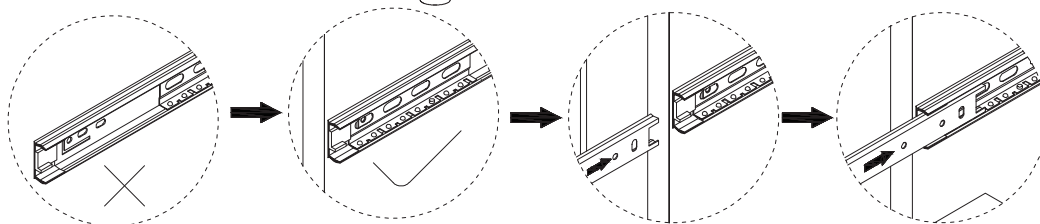
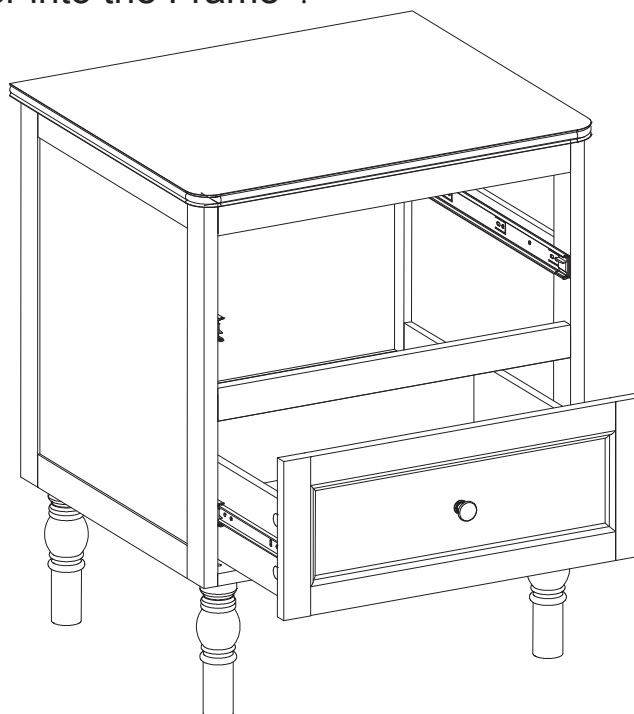
B	C
Ø15*9mm Cam Lock 4pcs	Ø6*30mm Dowel 4pcs

9. Assemble the drawer by following the steps shown in the illustration below.

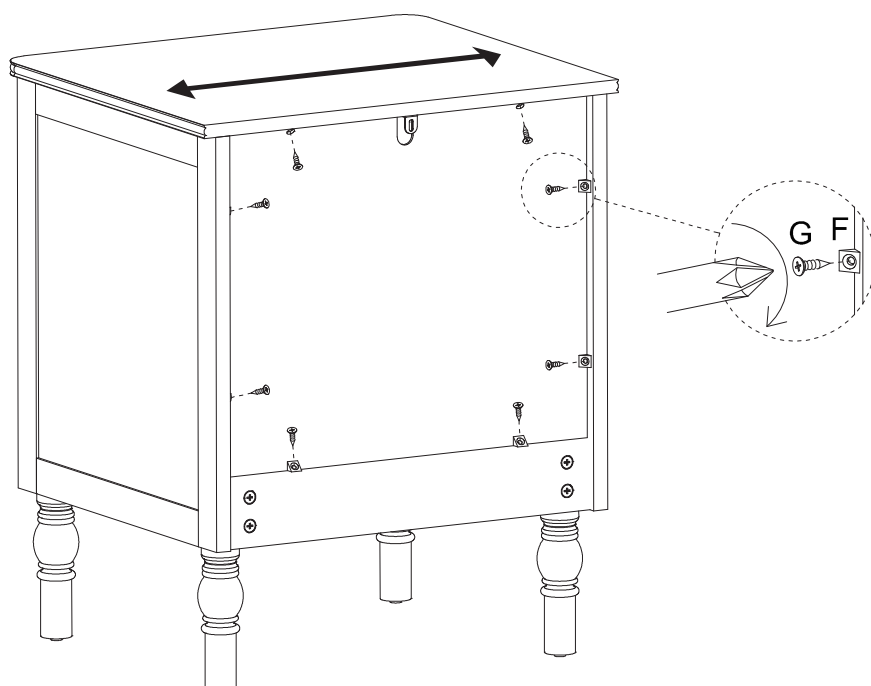




<b>A</b>	<b>B</b>	<b>D</b>	<b>H</b>	<b>I</b>	<b>L</b>	<b>M</b>	<b>N</b>
							
M6*35mm Cam Lock Screw 8pcs	Ø15*9mm Cam Lock 8pcs	M4*35mm Screw 8pcs	Knob 2pcs	M4*8mm Bolt 2pcs	Cover 8pcs	Slide Rail 4pcs	M3.5*12mm Screw 12pcs

10. Slide the lower drawer into the Frame .

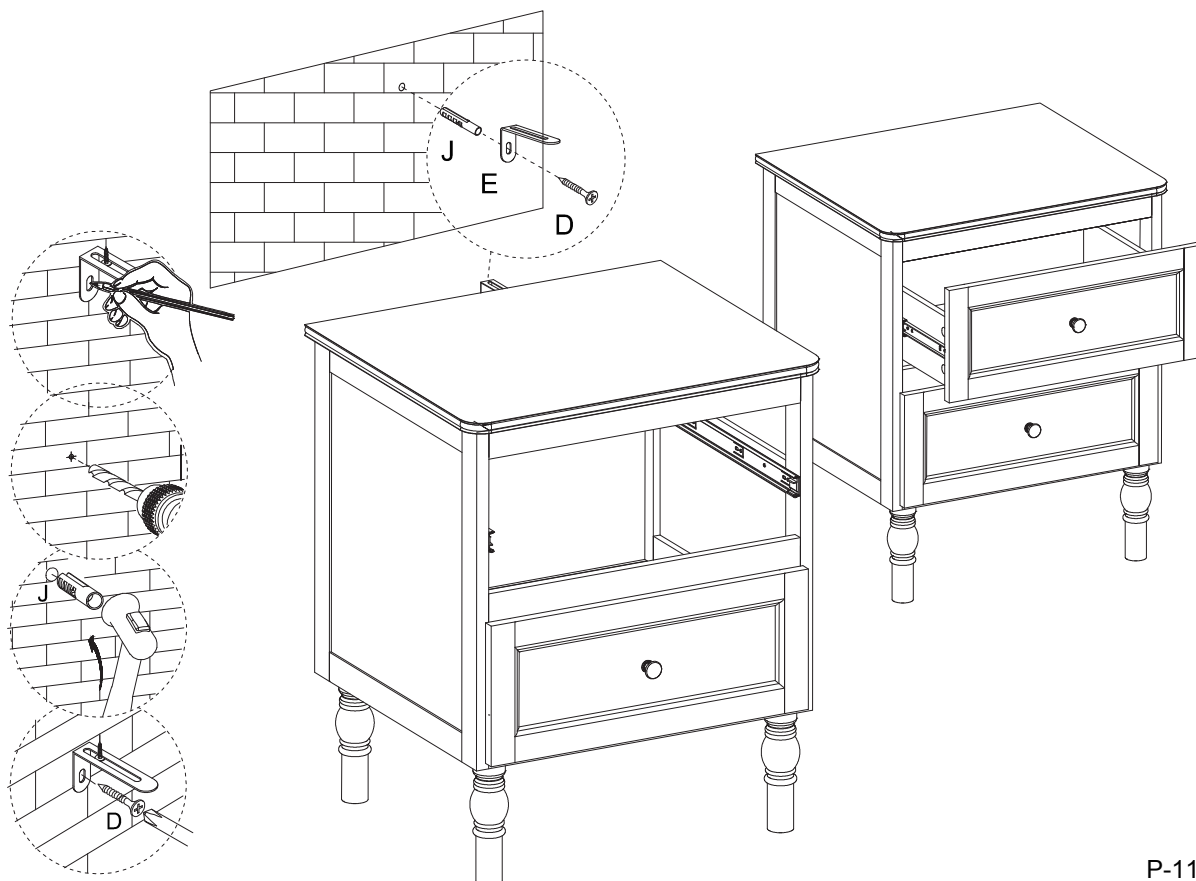


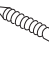

11. Attach the plastic buckles on back. Before securing them, manually adjust the frame to ensure the drawers are properly aligned, even, and parallel. Adjust the center leg if necessary.



F	G
 Plastic Buckle 8pcs	 M3.5*14mm Screw 8pcs

12. Fix the wall bracket to the wall by drilling holes, inserting wall anchors, and securing it with screws. Slide the upper drawer into the Frame.



D	J
 M4*35mm Screw 1pc	 Wall Plug 1pc