

DUSK.COM

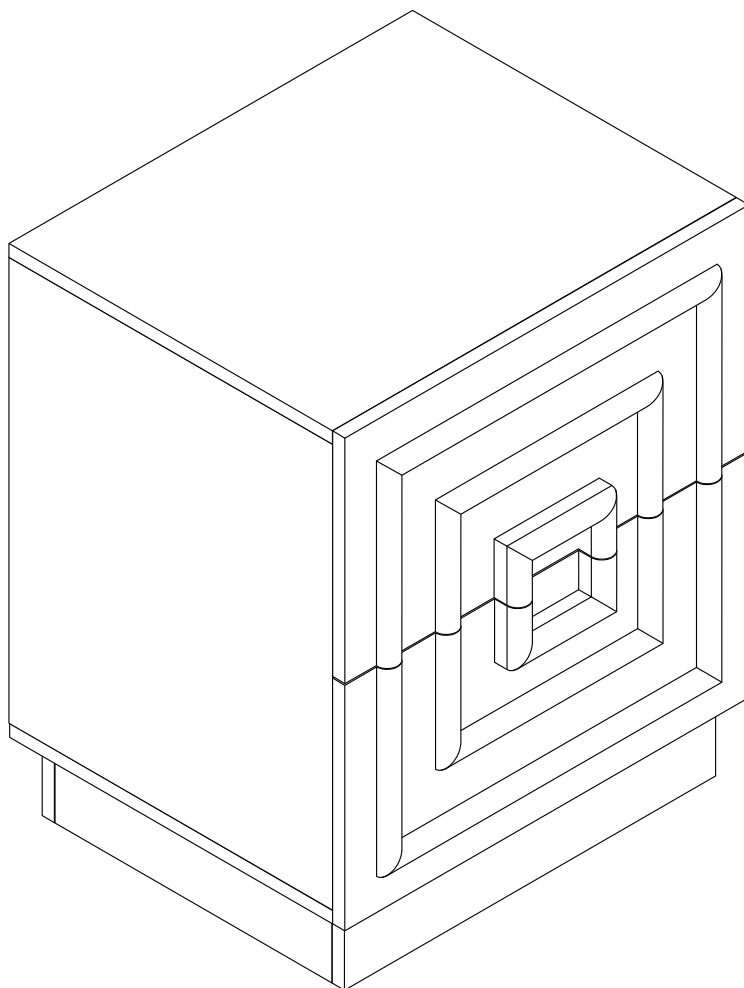
LIVING | BEDROOM | DINING

Range Name: Harlow

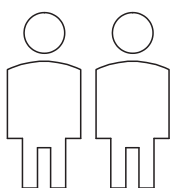
Box Dimensions: W63xD45.5xH31 (cm)

Product Dimensions: W48xD40xH59 (cm)

Bedside



Up to 1 hour
assembly time



Two person
assembly



This product is intended for domestic use only, not for commercial purposes.

V-1.0

P-1/11

IMPORTANT

ASSEMBLY TIP

Before you begin, it's best to identify all of the parts and fittings to build your bedside frame. We advise laying these out on the floor to check you have everything, and to familiarise yourself with all of the parts and fittings before building.

TOP TIP

We recommend that you assemble the bedside in the room you'd like it to be located. This will help prevent any risk of damage to the frame whilst moving it.

SAFETY AND CARE

1. It's important to ensure children and animals are kept away from the assembly area, as there are small components used in this product which could present a choking hazard. All plastic and wrapping materials should also be kept away from children and animals to prevent any risk of suffocation.
2. Do not stand on your product.
3. Always use the item on firm level ground, ensuring all legs remain in contact with the ground.
4. Place heaviest items in the lowest drawers.
5. Do not set TV or other heavy objects on top of the product.
6. Children should always be under supervision whilst using this product. Never allow children to climb on the drawers.
7. Never keep more than one drawer open at the same time.
8. In order to prevent overturning, this product must be used with the wall attachment device provided.
9. Serious or fatal crushing injuries can occur from tipping furniture.

HELP AND SUPPORT

Please contact our customer service team on 0113 519 0311 if you have any questions or issues with your purchase.

RECYCLING

Please ensure that packaging is disposed of in a safe and environmentally friendly way, and recycle where possible. Please keep your assembly instructions safe to refer back to in the future.

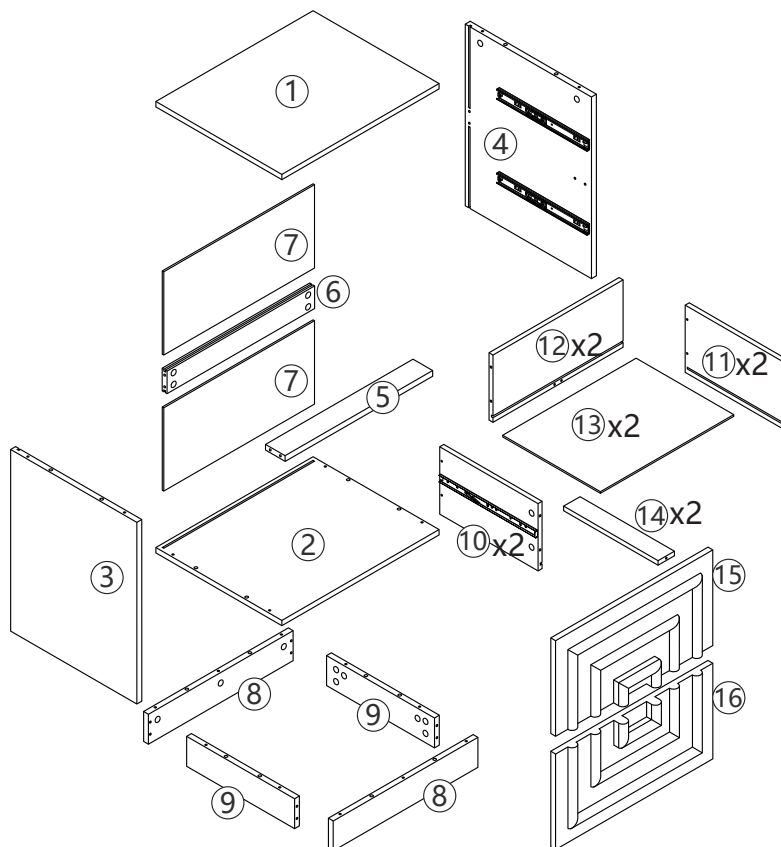
CARE AND MAINTENANCE

1. Only clean using a damp cloth, do not use bleach or abrasive cleaners as they may damage the finish over time.
2. Do not use a very wet cloth or allow any liquid to contact with the surface for a long period of time. Wipe any spillage immediately. Absorption can cause wood to warp or finishes to de-laminate.
3. Do not scrub or rub the surface when cleaning.
4. Do not drag the bedside when moving, lift it off the floor instead.
5. Use a placemat or a coaster when putting hot items (e.g. hot drinks and dishes) on the wood surface.
6. It is not recommended to place the item next to sources of heat such as radiators, fires or directly exposed to sunlight. This may cause the wood to crack, split or fade due to the heat and humidity.
7. Wood will mellow and change colour over time, we recommend that ornaments and items placed on the surface to be moved regularly to prevent uneven mellowing.
8. Regularly check all fixings to ensure none have come loose. Re-tighten if necessary.
9. Avoid sharp items such as a screwdriver or any pointy tools.

Parts list

Before you begin building your bedside, please take a moment to read through the instructions and make sure that you have all the relevant parts listed on the parts check list.

Part Number	Part Description	Quantity
1	Top Panel	1 pc
2	Bottom Panel	1 pc
3	Left Side Panel	1 pc
4	Right Side Panel	1 pc
5	Front Support Bar	1 pc
6	Back Support Bar	1 pc
7	Back Panel	2 pcs
8	Leg Long Panel	2 pcs
9	Leg Short Panel	2 pcs
10	Drawer Left Side	2 pcs
11	Drawer Right Side	2 pcs
12	Drawer Back Side	2 pcs
13	Drawer Bottom	2 pcs
14	Drawer Bottom Support Bar	2 pcs
15	Drawer Front	1 pc
16	Drawer Front	1 pc



Fittings

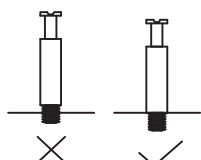
Please check you have all the fittings listed below with your product.

A M5*35mm Cam Lock Screw 40pcs+5pcs extra	B Ø15*10mm Cam Lock 40pcs+5pcs extra	C Ø8*30mm Dowel 16pcs+2pcs extra	D M4*30mm Screw 12pcs+1pc extra	E M3*12mm Screw 8pcs+1pc extra	F Plastic Buckle 8pcs+1pc extra
G M4*40mm Screw 4pcs	H Cover 8pcs+1pc extra	I Mat 4pcs			

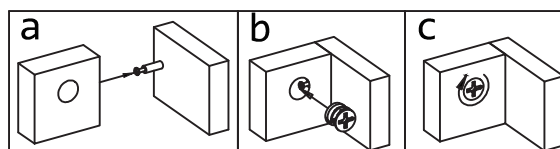
Pre- assembled Fitting

J Slide 4pcs	K Slide 4pcs	L M3.5*12mm Screw 24pcs
-------------------------------	-------------------------------	--

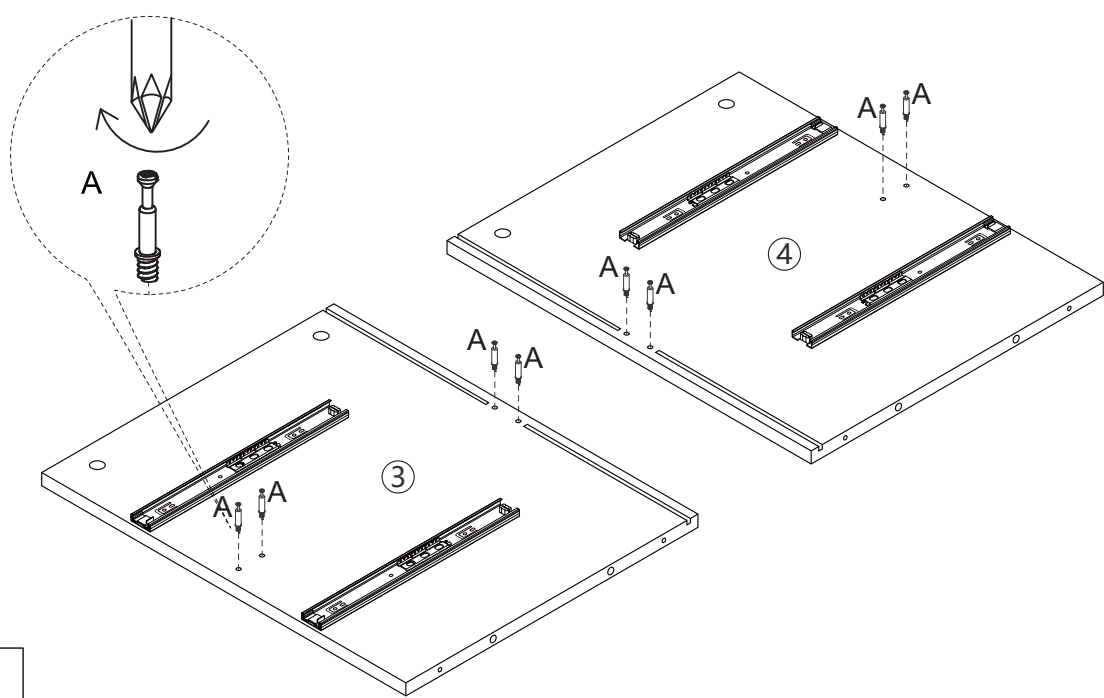
Ensure the cam lock screws are installed correctly, as indicated by the "check mark" below.



Refer to the illustration below to correctly use the cam lock screws for assembling the panels.



Step 1. Attach parts to the panel.

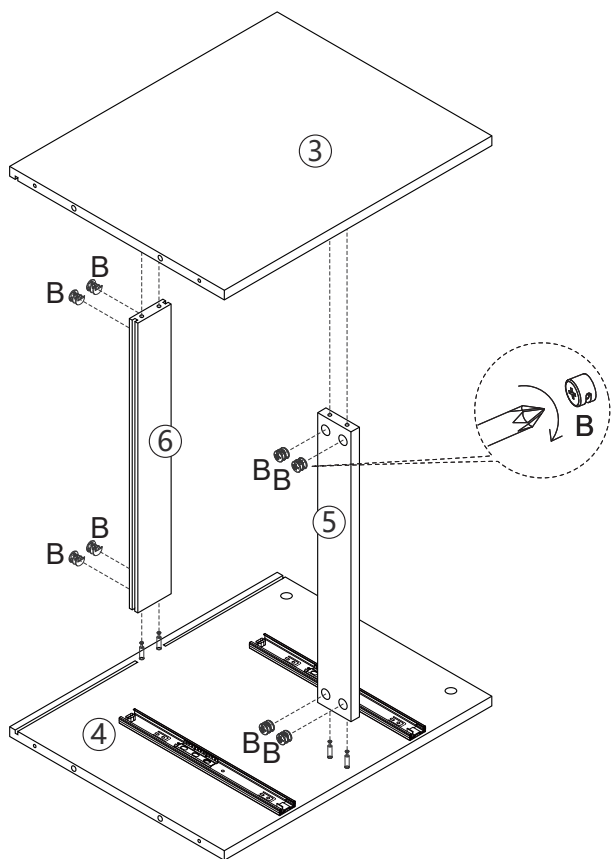


A



M5*35mm
Cam Lock Screw
8pcs

Step 2. Assemble the left and right side panels with horizontal bars.

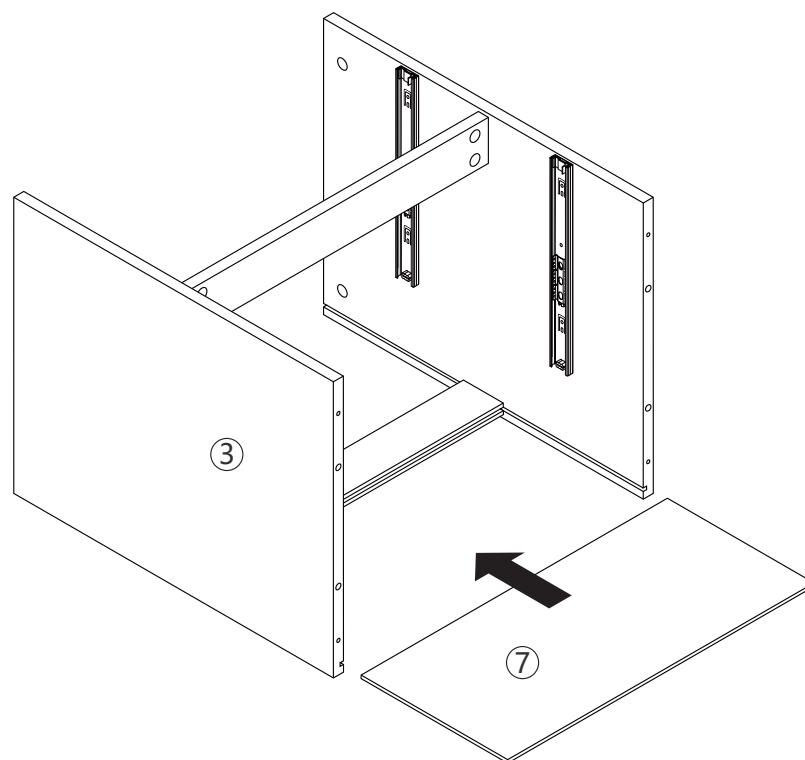


B

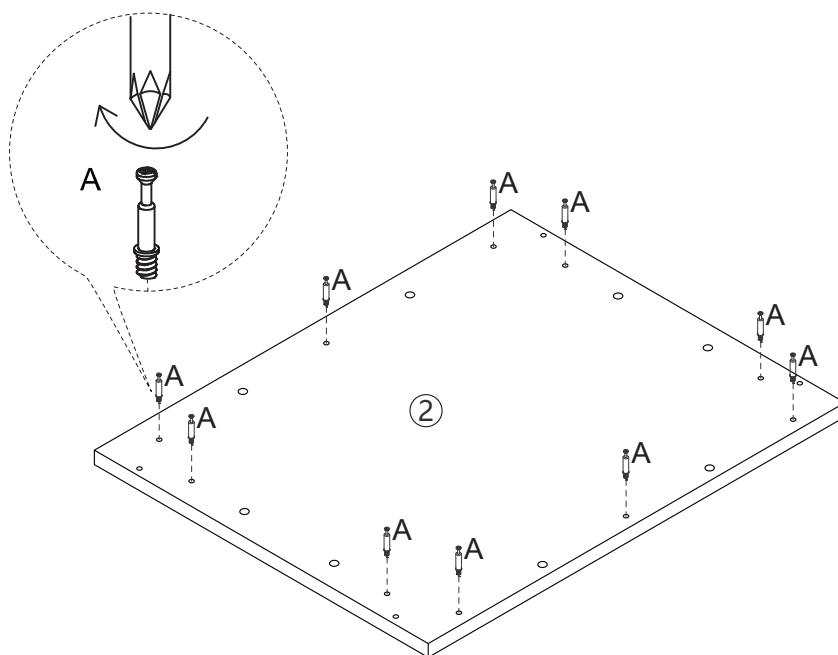



Ø15*10mm
Cam Lock
8pcs

Step 3. Assemble back pan.

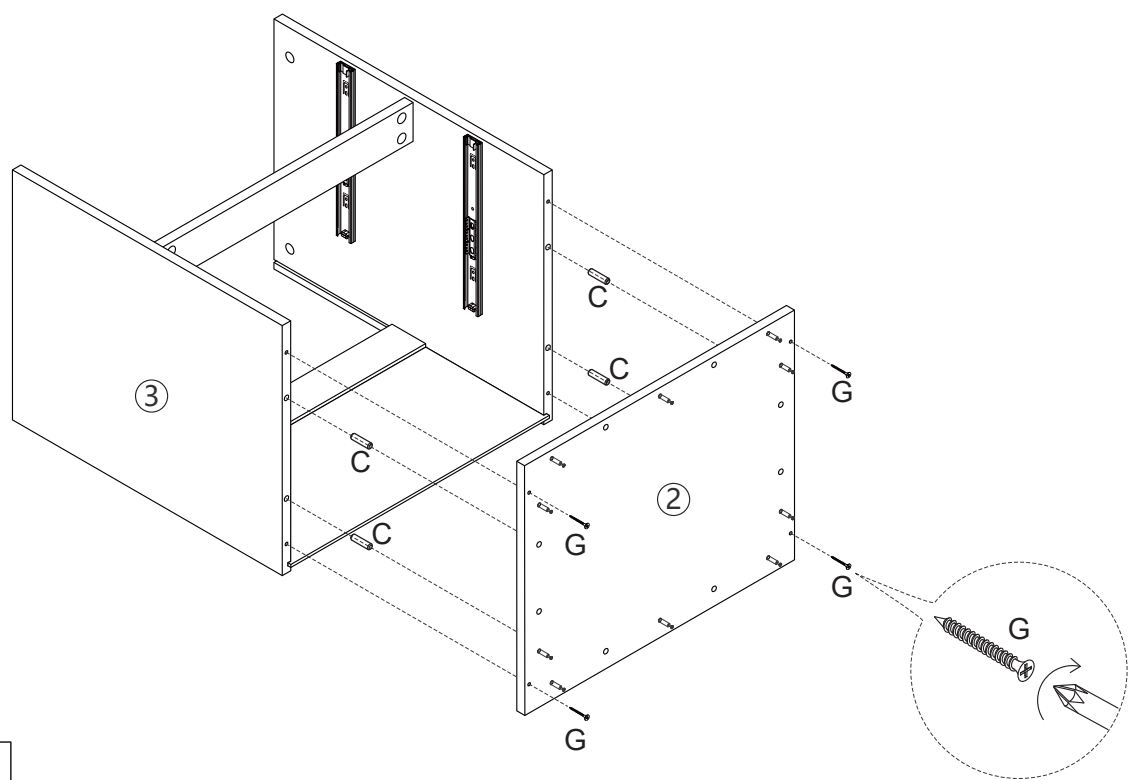




Step 4. Attach parts to the panel.



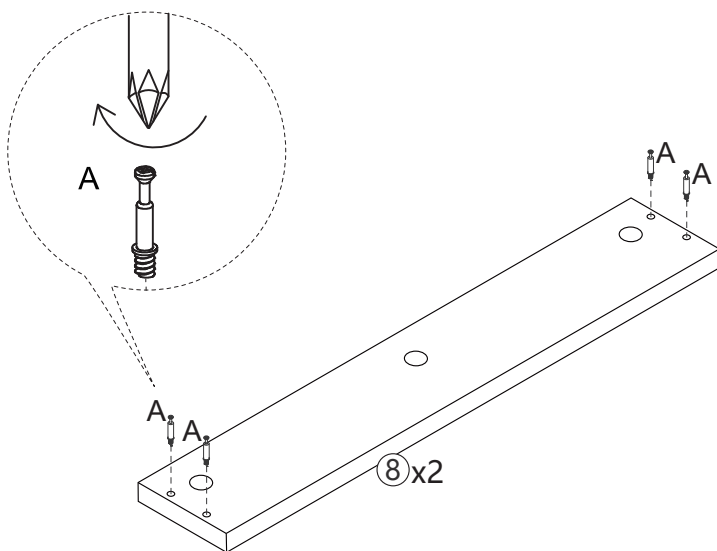
A

M5*35mm Cam Lock Screw 10pcs

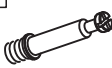
Step 5. Attach panels to the bottom.



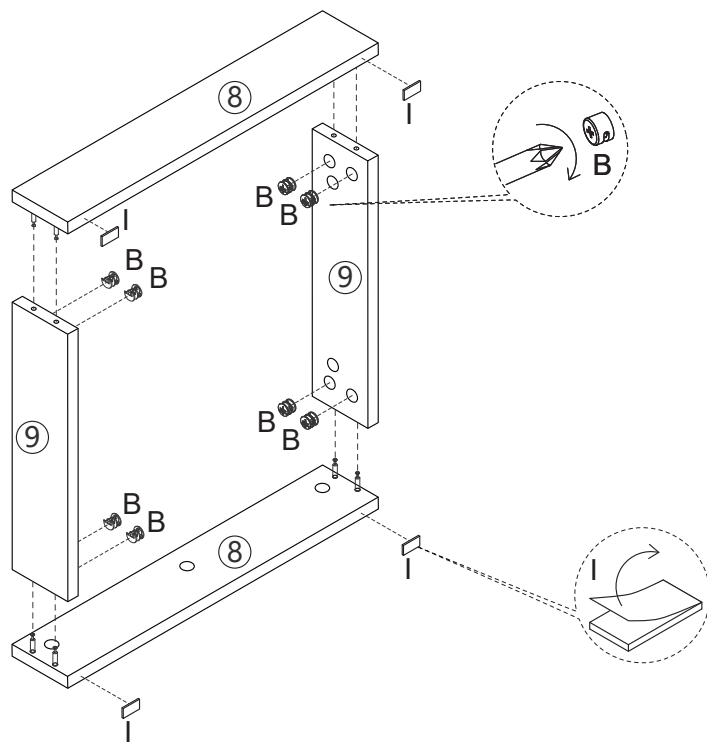
C		G	
Ø8*30mm Dowel		M4*40mm Screw	
4pcs		4pcs	


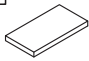
Step 6. Attach parts to the panel.



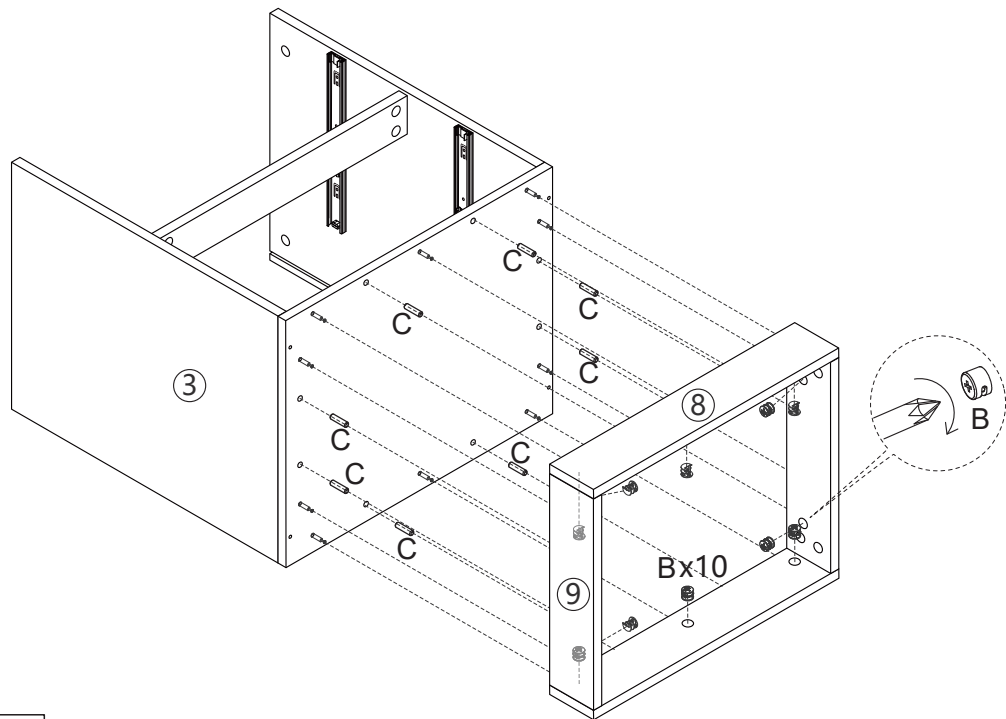
A	
M5*35mm Cam Lock Screw	
8pcs	



Step 7. Assemble the foot panel and attach the foot pad as shown in the picture.



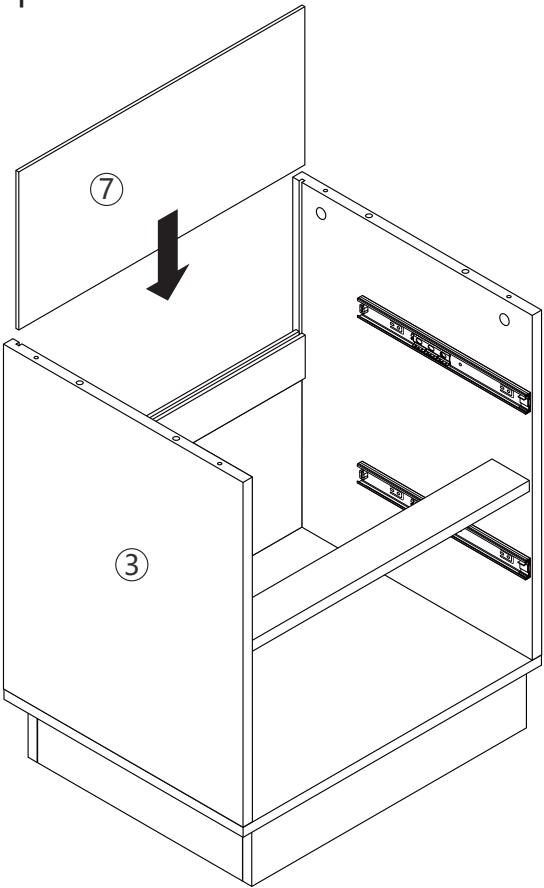
B	I
	
Ø15*10mm Cam Lockk	Mat
8pcs	4pcs

Step 8. Attach Legs to the bottom.

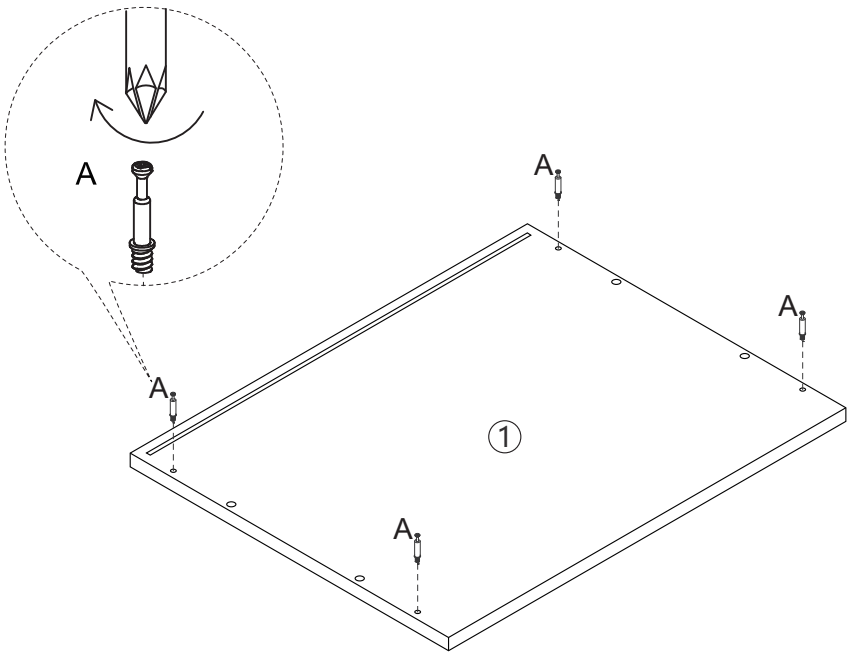



B	C
	
Ø15*10mm Cam Lockk	Ø8*30mm Dowel
10pcs	8pcs

Step 9. Assemble back pan.

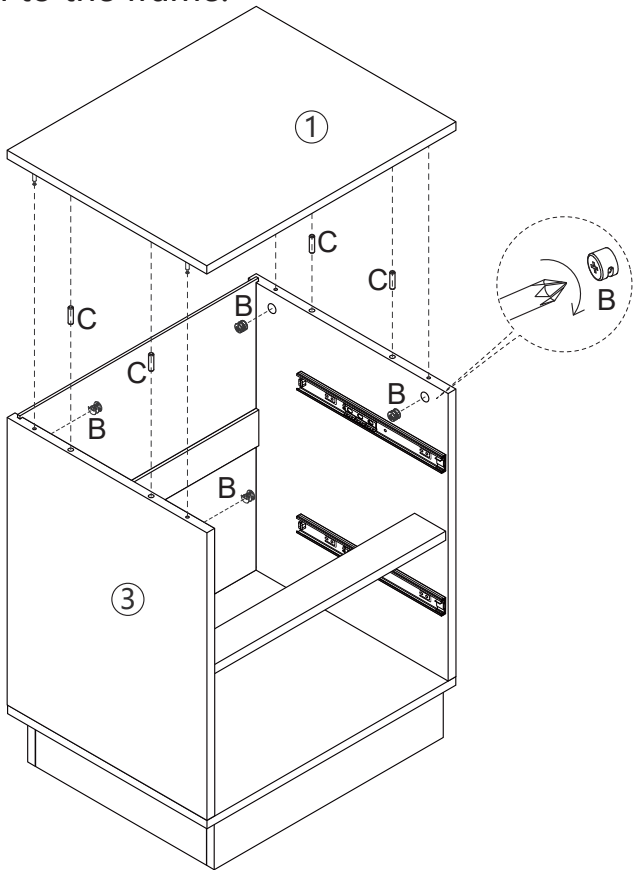



Step 10. Attach parts to the panel.




A

M5*35mm Cam Lock Screw
4pcs

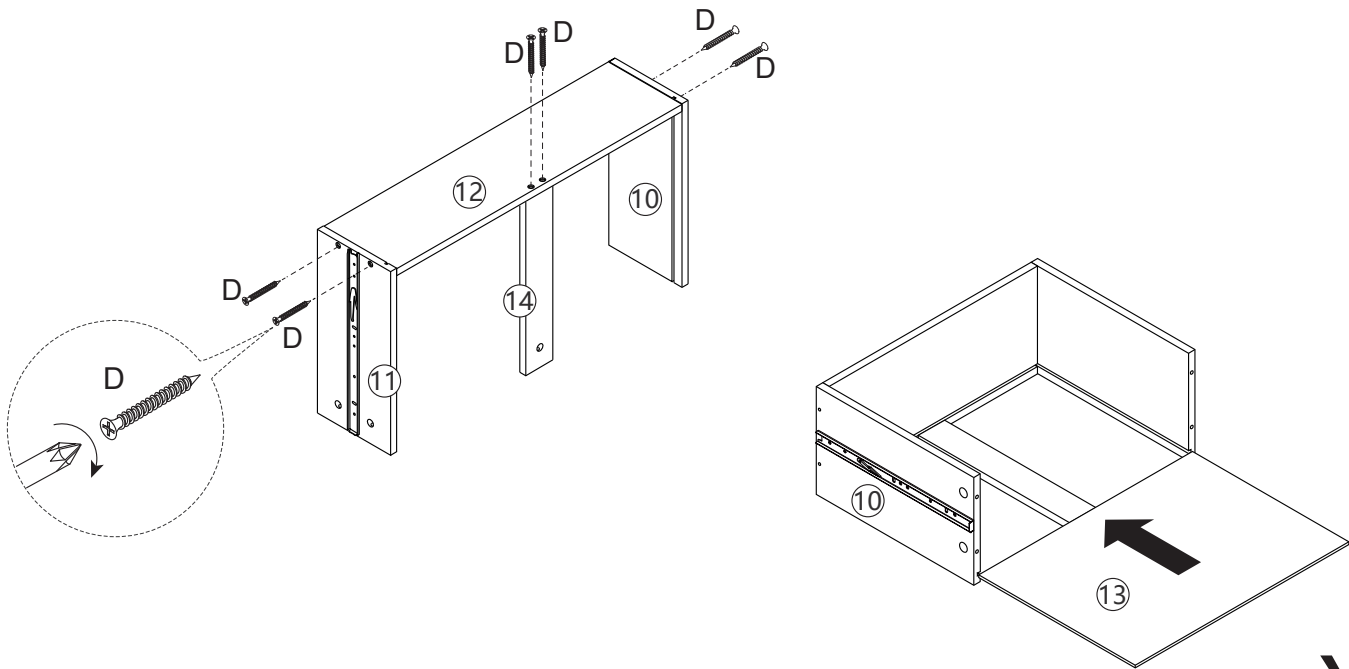
Step 11. Attach the top panel to the frame.

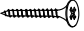


B	
Ø15*10mm Cam Lockk	
4pcs	

C	
Ø8*30mm Dowel	
4pcs	

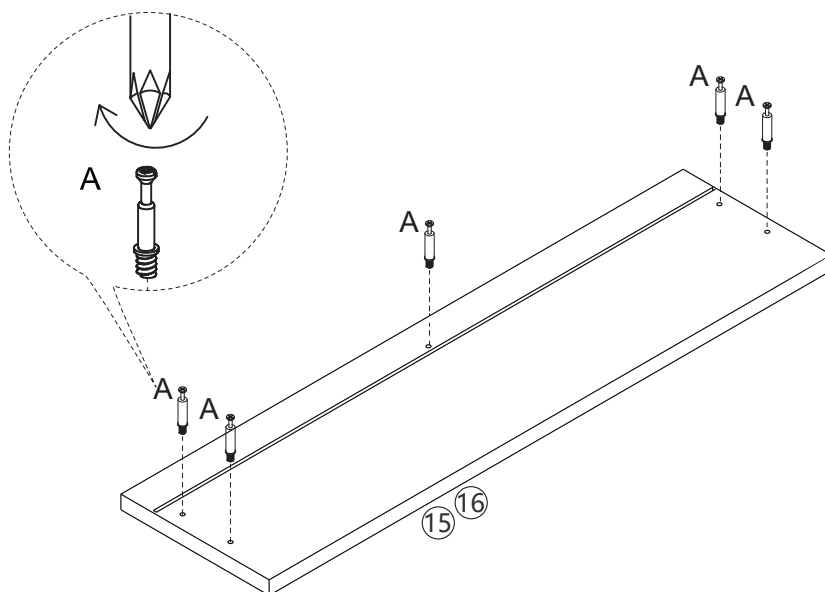
Step 12. Assemble the drawer frame and drawer bottom plate.



D	
M4*30mm Screw	
12pcs	

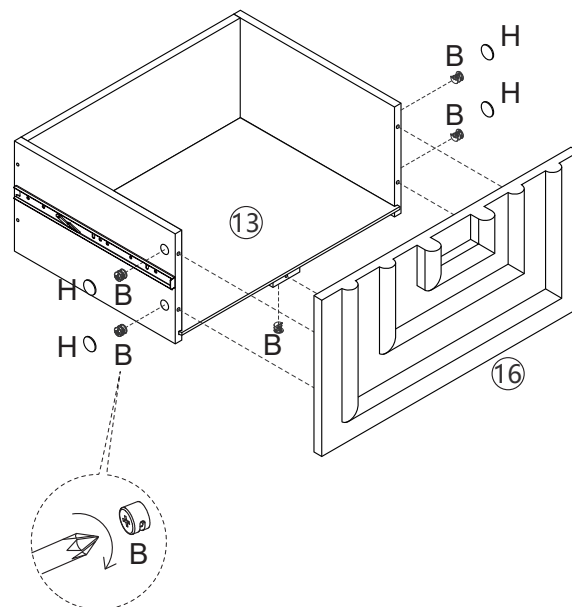
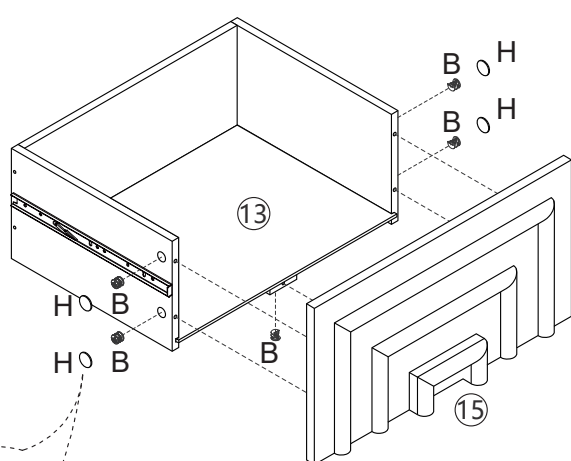
x2

Step 13. Attach parts to the panel.



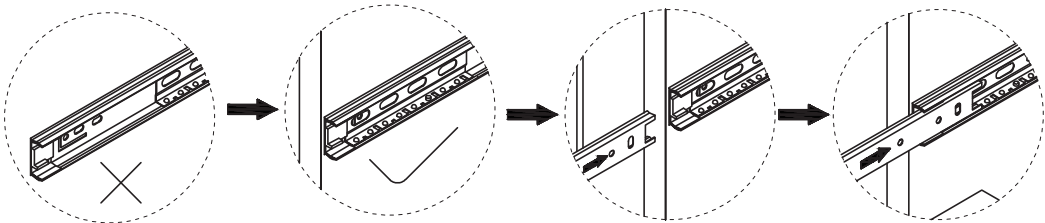
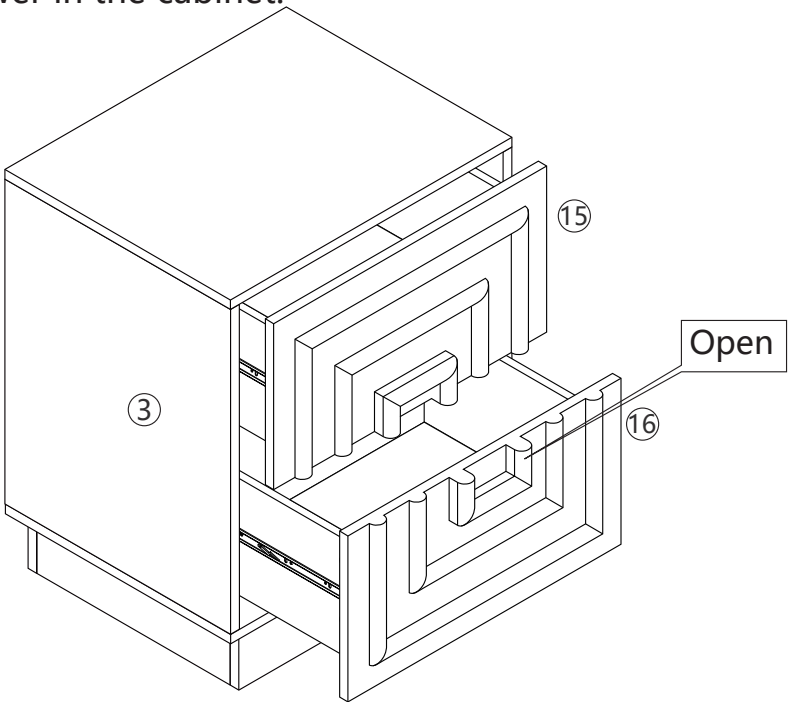
A	
	M5*35mm Cam Lock Screw
	10pcs

Step 14. Assemble drawer panel.

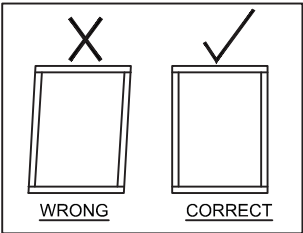


B		H	
	Ø15*10mm Cam Lock		Cover
	10pcs		8pcs

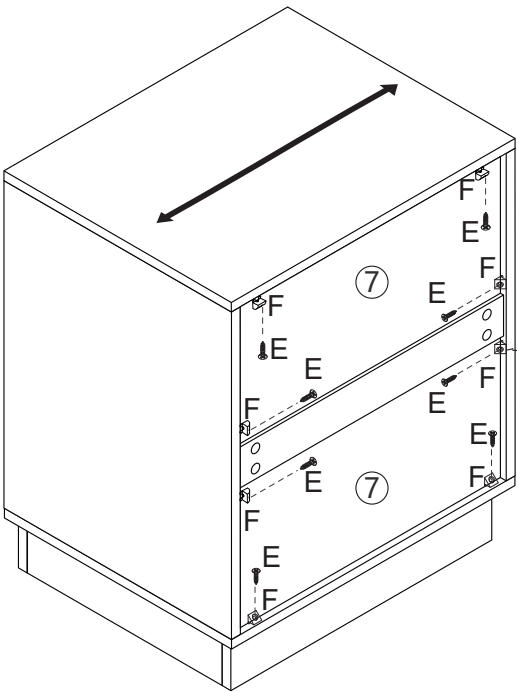
Step 15. Assemble drawer in the cabinet.





Step 16. Attach the plastic buckles and screws.



NB: Before tightening the plastic buckles and screws, please ensure the frame is square



F	E
	
Plastic Buckle	M3*12mm Screw
8pcs	8pcs