

Hybrid Mattress

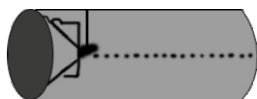
Double/King/Super King

1



Take out the rolled-up mattress and place it on a flat surface.

2

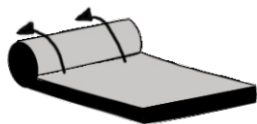


Please open the mattress packaging following the line of the seal on the bag, taking care not to pierce the inner vacuum packaging or the fabric. We do not recommend the use of Stanley knife.



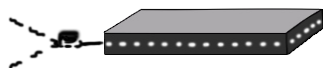
The rolled mattress can unroll quickly if the inner vacuum packing gets punctured. Always stand on the end of the rolled-up mattress to avoid injury when it is decompressed.

3



Unfold the mattress.

4

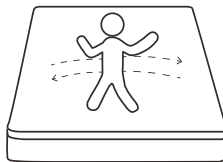


Remove the vacuum packaging carefully to allow the mattress to decompress and expand.

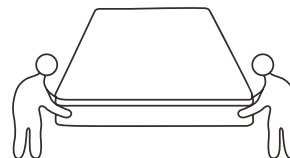
5

After the mattress is unfolded, it can help mattress restore quickly by the following methods:

- ① Adults can roll back and forth on the mattress OR
- ② Two people hold the edge of the mattress and shake it multiple time.



①



②

6



The mattress will fully expand and recover after 48-72 hours.